

MOSHANNON VALLEY PROGRESS

Fall Issue—September 2022

Volume 21 Issue 3

Inside this issue:

Executive Director's Message	1
Senator Corman to Retire - Senatorial District to Change	1
Upcoming MVEDP Board of Directors Election - Cancelled	1
Philipsburg Borough Uses Eminent Domain Power to Acquire/Demolish Dilapidated Structures	2
Pennsylvania's Manufacturing Week	3
Thank You Members	3
MVEDP Board of Directors FY 2022	3
Philipsburg Marble & Granite to Hold Open House Event	5
Space to Rent at MVRBC	5
Spotlight on Business - Lee Industries, Inc.	6
An Official of The Progress Fund Visits the MVEDP	7
State to Provide \$500 Million To Non-Entitlement Local Governments	7
MVEDP Has Low-Cost Money to Lend	7
Chamber Member Benefits Through the MVEDP	8

Executive Director's Message



We are very pleased to see the work of Philipsburg Borough to demolish some of the old, dilapidated buildings within the bor-

ough. Twelve years ago, the MVEDP had an interest in doing something about the two old buildings on Water Street. Our idea to demolish those buildings fell on deaf ears and that was disappointing to us. Now, twelve years later, it is great to see the buildings cleared from the properties.

Speaking of Philipsburg Borough, the borough has not looked this good physically in over 30 years. A new campground at Cold Stream is now planned, the Slabtown Park continues to be expanded, the demolition of four dilapidated buildings, the terrific condition of the parks in the area are all a testament to the work of the Borough. We know that there are some volunteers who work on the parks too and we thank them for their contribution to the community. Congratulations to Joel Watson, Tim Ryder and the other staff of the borough who are doing a great job of maintaining our community.

Continued on Page 2

Senator Corman to Retire - Senatorial Representation to Change

Long-time State Senator Jake Corman will be retiring by the end of this year. Residents of the Moshannon Valley region who live in Philipsburg Borough and Rush Township are currently in Senator Corman's district.

Due to continued population losses, the state will not maintain that district but will instead add it to the districts of other state senators. Residents of Philipsburg and Rush Township will have current Senator Wayne Langerholc as its senator. The MVEDP wishes Senator Corman well in his retirement.

Upcoming MVEDP Board of Directors Election - Cancelled

Each year, the MVEDP holds an election of board members that will serve on the Board of Directors. There are 15 people who serve on the board. There are currently two vacancies on the board.

There are five board members who are up for re-election this year: Karen Blair, Jeff Herr, Bill Jones, John Shimko and Gene Wardo. Each of these board

Continued on Page 2

Philipsburg Borough Uses Eminent Domain Power to Acquire/Demolish Dilapidated Structures

Congratulations to Philipsburg Borough for their use of eminent domain powers to acquire and demolish the two dilapidated structures on Water Street.



Photos of the dilapidated old buildings on Water Street.



EXECUTIVE DIRECTOR'S MESSAGE Continued From Page 1

Elsewhere in this newsletter is an article about Pennsylvania's designated Manufacturing week of October 7th through the 14th. We are blessed to have some terrific manufacturers in our area. As of the date of this writing, we count 24 manufacturers within the Moshannon Valley region. Thank you to our manufacturers for the payrolls, jobs and other benefits that they provide to the people our region.

Upcoming MVEDP Board of Directors Election - Cancelled Continued From Page 1

members wants to keep their seat on the board and are willing to run again in the board election.

To date, two other area business officials have submitted their name for consideration on the ballot: Robert Maltais of Mid Penn Bank, and Eric White of CNB. **The MVEDP now has seven candidates for the seven seats that are available.** For this reason, the 2022/23 board of directors election will not be held at this time. The MVEDP will welcome Mr. Maltais and Mr. White to the board at the December board of directors meeting.

Pennsylvania's Manufacturing Week

The Commonwealth of Pennsylvania has designated October 7th – 14th as Manufacturing Week to recognize the significance of manufacturing in the state. The MVEDP is pleased to recognize the manufacturers within the Moshannon Valley region.

Some of the benefits of manufacturing include: the jobs, the taxes paid, better work environments, a local skill base is maintained, increased research and development to create better products, middle class job growth, technology-driven productivity growth, improved quality of life and a better standard of living.

Years ago, there were a handful of manufacturers that employed many people from the area. Cigar and clothing manufacturing were dominant here. Lee Industries and REICHdrill were key manufacturers then. It is a very positive thing to see the diversification in the manufacturing sector that exists here now.

At last count, the MVEDP had identified 24 manufacturers in the Moshannon Valley region:

Lee Industries	Drucker Diagnostics	PolyK Technologies
Organic Climbing	Creotek, LLC	Advanced Powder Products
Diamondback Truck Covers	REICHdrill	Walker Lumber
Pre-Cut Lumber	UMI Performance	Nearhoof Machine
PMG Pennsylvania	Custom Castings, NE	Nittany Laser Technologies
Grauch Enterprises	Genna Ice	Holt Precision Tool
G-O Metric	Navaco	Durakan
Penn Pallet	EC Power	Harpster of Philipsburg

Thank You Members

The Moshannon Valley Economic Development Partnership thanks you for your support of our economic & community development efforts!

Renewals 3rd Quarter

- Beard Law Company
- Blaise Alexander Chevrolet & Buick
- Cen-Clear Child Services
- Choice Bumper, Inc.
- Clearfield County Career & Technology Center
- Decatur Township
- Diamondback Automotive
- Dixoncom, LLC
- ER Smith Paving

MVEDP Board of Directors FY 2022

Bryan Bennett	President
Dustin Minarchick	1st Vice President
Wanda Ryen	Vice President
Dr. Karen Blair	Vice President
Jim Pollock	Assistant Treasurer
Steve Lyncha	Board Member
Jeff Herr	Board Member
Bill Jones	Board Member
Dr. Robert Steward, Jr.	Board Member
John Shimko	Board Member
Gene Wardo	Board Member
Rusty Christoff	Board Member
Josiah Jones	Board Member

IN THE SPOTLIGHT



CPI CENTRAL PENNSYLVANIA INSTITUTE OF SCIENCE AND TECHNOLOGY

NOW OFFERING
Two-Year Associate in Specialized Technology Degree Programs in Partnership with:

ARIEL CONSTRUCTION **CASE** **GROFF TRACTOR & EQUIPMENT, INC.** **Cleveland Brothers CAT**

Healthcare Management | Natural Gas Compression
Heavy Diesel Construction | Advanced Manufacturing

www.cpi.edu | 814-359-2793

ROCKIN V SIGNS & APPAREL

SCREEN PRINTING & EMBROIDERY

TEAM APPAREL
JERSEYS, HATS, WINDBREAKERS & BAGS

FAN APPAREL
T-SHIRTS, SWEATSHIRTS, HOODIES
1/4 ZIPS & HATS

SIGNS
BANNER, YARD SIGNS, MAGNETIC SIGNS, DECALS, FLAGS & MORE

ROCKINV.COM

342-1611 - INFO@ROCKINV.COM



Central Insurers Group
Charles A. Jones Agency



75 Years of Excellence
Competitive Rates for You

Phone (814) 342-1880
www.centralinsgrp.com
20 S. Front St., Philipsburg, PA 16866
wjones@centralinsgrp.com

DRIVING RANGE

BIG ROCK SWING & PING I.I.C.

OPEN DAWN TO DUSK
Fully Automated


10 pads plus grass area!

Club rentals available during store hours!

Route 53 Houtzdale-Madera Hwy.
Next to B & G Trees and Nursery

\$5 Large Bucket (72 Balls)
\$3 Small Bucket (36 Balls)

378-5600



A Credit Union our COMMUNITY can grow with!

We've always been there for your personal needs. Now we're here for your business needs as well.

Lending, processing, payroll, benefits, and so much more!
Available now!

BEST PLACES to work in PA 2020

TOP 2021 100 ORGANIZATIONS
PENNSYLVANIA REGIONAL CENTER

Downtown Philipsburg
201 N Front St
www.TIMBERLANDFCU.org

LENDER **NCUA**

Blaise Alexander
CHEVROLET - BUICK

113 WALTON STREET, PHILIPSBURG, PA 16866
800-462-1519 OR 814-342-3223

SALES HOURS	PARTS HOURS
MON., TUES., THURS., FRI.	MONDAY-FRIDAY
9:00 - 8:00	8:00-5:00
WEDNESDAY & SATURDAY	CLOSED SATURDAY
9:00 - 5:00	

WWW.ALEXANDERPHILIPSBURG.COM

**TAKING DEALS THE OTHER GUY'S WON'T!!
GUARANTEED!!**

DIXONCOM
TECHNOLOGY SERVICES

814.287.1038

PC & MAC COMPUTER REPAIR
VIRUS & MALWARE REMOVAL
HOME & BUSINESS NETWORKING
NEW & REFURBISHED COMPUTER
TRAINING & TUTORIALS

Choice Bumper To Bumper

800-874-8341
www.choicebumper.com
100 North 9th Street
Philipsburg, PA 16866

BODY PANELS
WHEEL LINERS
BUMPERS
BEDLINERS
LIGHTS
MIRRORS
STARTERS
DOORS
FENDERS
FUEL LINES
GAS TANKS

WASSON INSURANCE AGENCY

2440 Commercial Blvd.
State College, PA 16801

Personal Service by:
AMY J. HOUSER, CPA
amyjhouse@yahoo.com
www.wassonins.com

Office: 814-237-5378
Cell: 814-880-2531
Toll Free: 866-936-0527

Ricotta Jewelry
Your watch & jewelry repair center
Since 1968

James E. Ricotta
Watchmaker
Jeweler
Goldsmith

105 N. Front Street
Philipsburg, PA
(814) 342-3709



Mary Kay's Catering
CATERING FOR ALL OCCASIONS

5330 MORRISDALE/ALLPORT HWY
ALLPORT, PA. 16821
814-345-1128

Mary Kay Beveridge
OWNER
MRCATERING16@G-MAIL.COM



(814) 277-6887

SNEATH FIRE SAFETY EQUIPMENT, INC.
EXTINGUISHER SALES & RECHARGING
INSURANCE & OSHA INSPECTIONS

CRAIG SNEATH

415 FIVE POINTS ROAD
LA JOSE, PA 15753

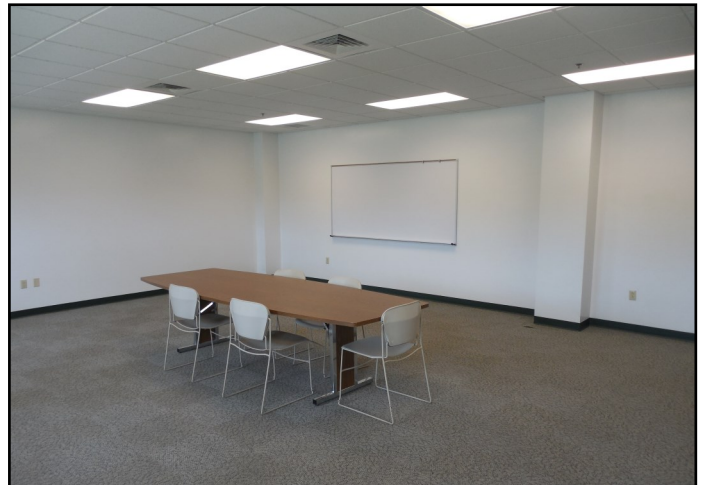


Space to Rent at the Mo. Valley Regional Business Center

The Partnership still has some space to rent at the Regional Business Center located in the Business Park facility. The Center is located across the street from Hogs Galore.



MVRBC Office Area, 1,070 SF



MVRBC Conference Room, 621 SF

There is an office space of 1,070 sf. available and a separate conference room of 621 sf.

Philipsburg Marble & Granite To Hold Open House Event

Philipsburg Marble & Granite will soon hold an Open House event at their new location in Chester Hill. The new facility is located at 121 Walton Street, Philipsburg, PA, 16866 next to the Blaise Alexander automobile dealership.

Noon to 7:00 pm.
 October 13, 2022
 New Location at:
 121 Walton Street, Philipsburg, PA 16866



Light refreshments and snacks will be served and there will be some door prizes.



WALTER HOPKINS & COMPANY, LLP
 CERTIFIED PUBLIC ACCOUNTANTS



Providing services since 1927:

TAX-ACCOUNTING-AUDIT

Philipsburg Clearfield
 342-2155 765-7876

"Experienced and Reliable"

CALL OR VISIT US AT WALTERHOPKINS.CO.COM

Delivering results.
Exceeding Expectations.



Keller Engineers is a highly skilled team of expert civil and structural engineers and surveyors dedicated to providing exceptional service through innovative design.



Hollidaysburg, PA • 814.696.7430
 State College, PA • 814.231.2925
www.keller-engineers.com

DiamondBack Truck Covers
 CRAFTED IN PHILIPSBURG, PA.
 Employing local aluminum welders, fabricators, & general labor. 205 Shadyline Drive
 1-800-935-5802
WWW.DIAMONDBACKCOVERS.COM



When our community succeeds, we all succeed.

At M&T Bank, we know how important it is to support those organizations that make our communities better places to live and work. That's why we offer both our time and resources and encourage others to do the same.

Philipsburg Branch
 409 North Front Street
 Philipsburg, PA 16866
 814-342-0300



mtb.com © 2014 M&T Bank. Member FDIC.

Central Intermediate Unit #10
 315 Link Road West Decatur PA 18878 • 814-342-6884 or 1-800-982-3373 (PA only)

The CIU #10 offers the following services to Centre, Clearfield and Clinton Counties:

- Customized educational services to business and industry
- Special Educational services
- Curriculum and Instruction liaison with Pennsylvania Department of Education
- Charter School liaison
- Non-Public School services
- Galaxy Arts in Education
- Early Intervention/ Preschool Services
- GEO Instruction and testing

Check our complete listing of services online at www.ciu10.org

SPOTLIGHT ON BUSINESS – LEE INDUSTRIES, INC.



The Moshannon Valley Economic Development Partnership is pleased to feature **LEE INDUSTRIES, INC.**, in this Spotlight on Business feature. Drucker Diagnostics and Cen Clear were featured previously.

Lee Industries is a manufacturer of the finest stainless steel kettle vats made in the world, and the company will soon celebrate their 100th year in operation here in the greater Philipsburg region. The company was first formed in 1924 when citizens of the area invested capital for the organization of a new company, Nickel Fabricating Company.

In 1928, the business was almost closed, and plans were made to dispose of the plant equipment to used machinery dealers. To keep the industry in the community, Mr. Thomas J. Lee, a leading Philipsburg businessman, purchased the plant and equipment and the new name of the corporation was Lee Metal Products Company. After this new company was formed, Lee Metals became a pioneer in stainless fabrication. Lee was the first manufacturer in the world to offer stainless steel steam jacketed kettles.

World War II brought a large demand for steam jacketed kettles for preparation of food in quantity at Army and Navy bases as well as on ships. The company workforce increased from 35 to 100 employees.

In 1975, the company was purchased by the employees. Majority stock was owned by Lewis Price and he became the president. The name of the company was changed from Lee Metal Products Company, Inc. to Lee Industries, Inc.

The company has two main divisions: process systems and equipment (the manufactured kettles, tanks, and agitators), and fluid transfer which manufactures the valves that are needed with the kettles.

In January 1986, the company was purchased by Mr. Robert W. Montler who was the vice president under Lewis Price. With the purchase, Mr. Montler became the president and CEO of the company.



Today, the Montler family continues to operate Lee Industries with Process Systems and Equipment and Fluid Transfer as divisions. It was in 2016 when Mr. Joshua T. Montler was appointed president and chief financial officer and chief operating officer.

With equipment in service throughout the world, Lee Industries remains a leader in the design and manufacturing of stainless steel and alloy process

Continued on Page 7

SPOTLIGHT ON BUSINESS – LEE INDUSTRIES, INC. Continued From Page 6

equipment for the food and beverage, pharmaceutical and biotech, personal care, cosmetic and cosmeceutical, animal food and health, and the industrial and chemical industries.

The company's longevity and success is a testament to their commitment to their customers, and a consistent top quality product built to accommodate their customers needs.



**NOT ONLY MADE IN AMERICA, MADE IN
THE GREATER PHILIPSBURG REGION OF
CENTRAL-PENNSYLVANIA!**

MVEDP Has Low-Cost \$\$ to Lend

The MVEDP's Revolving Loan Fund program has been available to local businesses since 1991. The matching loan funding can be used for working capital, machinery and equipment or land and buildings. The interest rate is as low as 3%! One of the most outstanding features of the loan program is the quick turnaround time. Once a reviewable application is received, the loan committee will meet and if the loan is approved, the money provided to the borrower in less than 30 days. Contact the MVEDP at 342-2260 if you have a business seeking matching loan financing.

An Official of The Progress Fund Visits the MVEDP

Kristi Wendel, Program Manager of The Progress Fund, recently stopped in to the MVEDP office to speak about the lending that they can make available to local businesses. The program partners with local banks and economic development agencies to provide needed funding to different type of businesses such as breweries, restaurants, bed & breakfasts, retail stores, wineries, Main Street projects and even small manufacturers.

The Progress Fund is headquartered in Greensburg, PA. They are a 501c3 non-profit that can make loans not only in areas of Pennsylvania, but also in West Virginia and Maryland. A small staff of just six people manages their loan program and portfolio.

Kristi is working to help businesses located throughout the PA Wilds Region. Philipsburg, the Wilderness City, is located within that region. Her office is located in Ridgway and she can be reached at kwendel@progressfund.org, or by telephone at 814-502-4316.

State to Provide \$500 Million To Non-Entitlement Local Governments

Pennsylvania state government will distribute \$500 million of federal American Rescue Plan Act funds to local governments across the state. The funds are being distributed now to local governments that are not entitlements, metropolitan areas or urban counties. Funds can be used for needed infrastructure projects, broadband development, affordable housing initiatives, and other uses. The funding is to be an investment in communities and local economies. The MVEDP looks forward to our local municipalities receiving some of this funding and undertaking important projects that will improve the quality of life for residents here in the Moshannon Valley.

Thank You Members

Continued From Page 3

Health Funeral Home
 Keller Engineers
 King Coal Sales, Inc.
 Lewis Paving & Sealing, Inc.
 Lumadue Excavating, LLC
 Moshannon Valley Pharmacy
 Nittany Clothiers, Inc.
 Penelec A First Energy Company
 Penn Highlands of Philipsburg
 Philipsburg Beverage, Inc.
 Philipsburg Electric Supply
 Ricotta Jewelry
 UMI Performance, Inc.

Chamber Member Benefits Through the MVEDP

- ChamberChoice:
 - Group Health Insurance -Dental
 - Life/Disability Insurance -Vision
- OnDemand Energy Solutions:
 - Electric Savings Program
- Free listing in our online business directory
- Invitation to all MVEDP events
- Email blasts to chamber members.
- E-communications concerning:
 - Seminars -Training opportunities
 - Export opportunities -Funding opportunities
- Voting rights for MVEDP board of directors
- Quarterly newsletter which provides information about potential new business opportunities
- Free advertising in the MVEDP's newsletter
- Sponsorship opportunities which is inexpensive advertising
- The benefit of the MVEDP's work to lobby for pro-business causes
- The benefit of the MVEDP's business connections to state and federal agencies



MOSHANNON VALLEY ECONOMIC
 DEVELOPMENT PARTNERSHIP
 200 SHADY LANE
 PHILIPSBURG, PA 16866