

MOSHANNON VALLEY PROGRESS

Summer/Fall Issue - September 2020

Volume 19 Issue 2



A Message from the Executive Director



Greetings from the board of directors and staff of the Partnership. We hope that you are safe and doing well.

These are such difficult times that we are living in right now with the COVID-19 virus and the increasing number of cases in our region, especially in Centre County. Just the other day, one of our employees needed to leave work to accompany his son to the hospital thinking that he might have contracted the virus. Luckily, it was not the COVID 19 virus but pneumonia.

The politics of the times is disappointing. The protestors, looting, damage, murders, and the racial and police issues. Add the COVID-19 virus on top of all of those issues and it is easy to have a negative outlook. We are still working hard to stimulate positive developments and to be positive during these very trying times.

We are very pleased to have two recent land sales: 2.3 acres

Continued on Page 4

MVEMS Purchases Land for New Ambulance Facility

The Moshannon Valley Emergency Medical Services company recently purchased 2.3 acres of land at the site of the former Philipsburg Area Hospital. MVEMS plans to construct a new emergency management headquarters at that site.

“We were pleased to work with the staff of the Moshannon Valley Economic Development Partnership to acquire their land,” said Danielle Parks, President of the MVEMS board of directors. “Our current facility is too small for our needs and is outdated. The new ambulance facility will be modern and it too will be equipped with up to date life saving equipment and vehicles. Our staff are excited about this new building project and they look forward to its completion within the next two years,” said Parks.

Continued on Page 2

Sewer Catt Purchases Land at Business Park

Sewer Catt, LLC, doing business as Roto Rooter, has purchased land in the Moshannon Valley Regional Business Park. John Moore, Tim and John Decker are the owners of the company. The company will build a new operations center and office facility on Lot #3 of the Business Park.

Continued on page 5

Inside this issue:

A Message from the Executive Director	1
MVEMS Purchases Land for New Ambulance Facility	1
Sewer Catt Purchases Land at Business Park	1
Thank You Members	3
CBT Bank, a Division of Riverview Bank, Takes Great Pride in their Participation in the Paycheck Protection Program, Powering our Small Businesses & Local Communities	4
Two Lots Available in the Moshannon Valley Regional Business Center	5
MVEDP Partners with Centre County 9-1-1 to Distribute PPE to Area Businesses	6
MVEDP Board of Directors	7
Enter Ben Franklin's \$50,000 Big Idea Contest Before September 21, 2020!	7
MVEDP Board of Director Election	8
Moshannon Valley Enterprise Center Renovation Project Now Completed	8



MVEMS

Continued from Page 1



Danielle Parks, President of the MVEMS board of directors and Wes Cartwright, one of the Managers at MVEMS sign the final paperwork to acquire 2.3 acres of land at the former Philipsburg Area Hospital Site, now the Philipsburg Area Commerce Park.

“The sale of the 2.3 acres of our Philipsburg Area Commerce Park site to MVEMS is consistent with our mission to assist and strengthen existing local businesses,” said Steve Lyncha, President of the MVEDP board of directors. “There is approximately 15 acres of land at the PACP site and we have owned that property since March 2017,” said Lyncha. “Since that time, we have had two prospects that were interested in the entire site but those deals did not happen. We knew that the site could be subdivided for multiple projects and that is

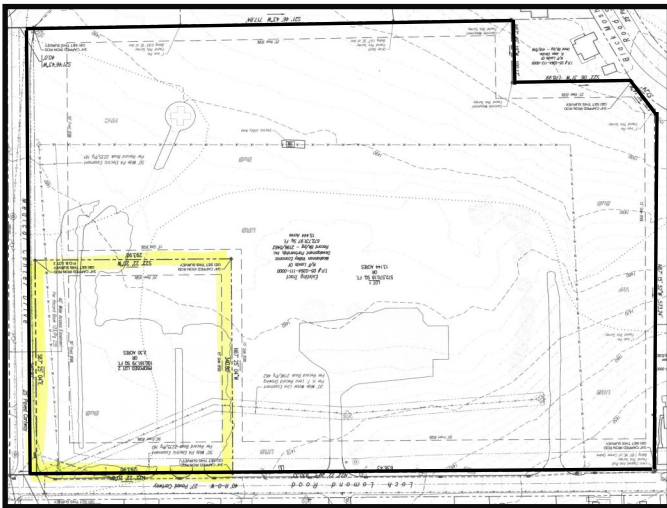


Photo depicts the 2.3 acres out of the total 14.7 acres at the PACP site that was recently sold to the Moshannon Valley EMS.

the direction that we are now going,” he said.

“The former Philipsburg Area Hospital provided life-saving services so it is somewhat ironic that our first sale of land at our PACP site is to another organization that provides life-saving services,” said Stan LaFuria, Executive Director of the MVEDP. “With the loss of the hospital, the importance of the MVEMS organization became even more significant to the people of this region. I was pleased and proud to previously serve for over 15 years on the MVEMS board of directors. The MVEMS organization has excellent full-time staff leadership and a dedicated board of directors,” he said.

Philipsburg Emergency Medical Service was formed in 1979. It was at that time that the company moved to their current location at 14 West Locust Street. Critically important is the fact that the company provides both Advanced Life Support (ALS) and Basic Life Support (BLS) services to the people that it assists. In 2002, Philipsburg Emergency Medical Service name was changed to Moshannon Valley Emergency Medical Service to reflect its service to the entire Moshannon Valley region consisting of almost 40,000 residents.

Moshannon Valley EMS goals are to provide and maintain the continued standard of care as set forth by the Pennsylvania Department of Health and to further provide the utmost care the residents of the Moshannon Valley Area have come to know and expect. Moshannon Valley EMS expects to meet or exceed the highest standards of pre-hospital, interfacility and medically related care, transportation, education and training. Moshannon Valley EMS is committed to grow with the expanding needs of the Moshannon Valley community.

Moshannon Valley EMS does not discriminate against socioeconomic status, language, age, physical abilities, gender and race. Moshannon Valley EMS involves the people of the Moshannon Valley area in its planning through media (radio and newspaper), public education, training, and speaking engagements. Moshannon Valley EMS assists seven other BLS ambulance services in the area by providing ALS service to its patients when applicable.

Moshannon Valley EMS currently employs 39

Continued on Page 3

MVEMS

Continued from Page 2

employees. EMTs and Paramedics care for the sick and wounded while quickly transporting them to a nearby medical facility. EMTs and Paramedics often work side by side with the police officers and firefighters to provide the best all-around care in emergency situations.

Moshannon Valley EMS has two Co-Managers, Wes Cartwright and Shelly Tormey. The company is governed by a Board of Directors consisting of five community members and two employees. Current members of the Board are Danielle Parks, Judy Pleskonko, Anthony Czap, Zachary Unch, Mel Curtis, Ben Bush, and Casey Cartwright.

The ambulance service will be seeking grants and funding from the municipalities and communities it serves to help fund this building project. If you are interested in learning how you can help fund this building project, please contact us at 814-342-3292 or email mvems@verizon.net. As always, the community's support is valuable to the continuation of our cause.

Thank You!

The Moshannon Valley Economic Development Partnership thanks you for your support of our economic & community development efforts!

Renewals 2nd Quarter

Belding & Mull, Inc.
 Big Rock Swing and Ping
 Boggs Township
 BPOE #1173
 C Classic Dodge Chrysler Jeep
 CBT Bank A Division of Riverview Bank
 Central PA Convention & Visitors Bureau
 Centre County United Way
 Centre Daily Times
 Certified Builders Wholesale
 Charles A. Jones Insurance Agency

Charles Navasky & Company
 Chester Hill Borough
 Clearfield County EDC
 Clearfield Wholesale Paper
 Clemmer Fire Protection, Inc.
 CMT Laboratories, Inc.
 CNB Bank
 Coleman's Asphalt Seal Coating
 Conklin's Corner Antique Mall & Gift Shop
 Cutting Edge Machining Solutions
 Diamondback Automotive
 Dixoncom, LLC
 Douglas Explosives, Inc.
 Foxpro, Inc.
 Fulton Bank
 Geisinger Medical Group
 Genna Ice, Inc.
 Glendale Industrial Dev. Association
 Glenn O. Hawbaker, Inc.
 Happy Valley Mini Golf
 Harpster of Philipsburg
 Houtzdale Heating & Air
 Hurwitz Real Estate
 Keith M. Folmar State Farm Insurance
 Keller Engineers
 Kephart Hardware Company
 Lee Industries, Inc.
 Long Motor Buses, Inc.
 Mary Kay's Catering
 Mike Baron
 Moshannon Valley EMS
 Moshannon Valley Pharmacy
 Nittany Clothiers, Inc.
 Nor East Mapping, Inc.
 PA American Water
 Philipsburg Beverage, Inc.
 Philipsburg Electric Supply, Inc.
 Philipsburg Kiwanis Club
 Philipsburg Marble & Granite
 Philipsburg True Value

Continued on Page 8

CBT Bank, a Division of Riverview Bank, Takes Great Pride in their Participation in the Paycheck Protection Program, Powering our Small Businesses & Local Communities

HARRISBURG, PA., September 2, 2020 – As we continue to be tested with the unknown, one thing remains certain: we are in business for the communities we serve. If our communities are thriving, we thrive, if our communities are facing challenges, we are right there alongside them. Our team at CBT Bank, a division of Riverview Bank, remained empowered and motivated throughout the Paycheck Protection Program process with one common goal, to make every effort necessary to provide the needed relief to our community neighbors, and we will continue to do as we have always done; remain relevant within the environment we face, identifying all possible opportunities, and delivering solutions with a heightened level of urgency.

We've restored our communities' jobs by helping local businesses secure funding through the Paycheck Protection Program administered by the Small Business Administration. To make this happen, The Riverview Bank and its operating divisions, CBT Bank and Citizens Neighborhood Bank, team worked diligently and efficiently to process over 1,257 loan applications, and secure over \$273 million in PPP funding. Brett D. Fulk, President & CEO, affirms,

“Our management team and board of directors continue to be dedicated to our customers, communities, employees and our company’s well-being. Our focus is to sustain a strong, adaptable business model that provides the resources needed to ensure we can effectively respond to the relief needs of our customers and employees with confidence, while continuing to remain a safe and sound company.”

CBT Bank is a division of Riverview Bank, serving the Pennsylvania market areas of Berks, Blair, Bucks, Centre, Clearfield, Cumberland, Dauphin, Huntingdon, Lebanon, Lehigh, Lycoming, Perry, Schuylkill and Somerset Counties through 27 community banking offices and three limited purpose

offices. Each office, interdependent with the community, offers a comprehensive array of financial products and services to individuals, businesses, not-for-profit organizations and government entities. Riverview's business philosophy includes offering direct access to senior management and other officers and providing friendly, informed and courteous service, local and timely decision making, flexible and reasonable operating procedures and consistently applied credit policies. The Company's common stock trades on the NASDAQ Global Market under the symbol "RIVE". The Investor Relations site can be accessed at <https://www.riverviewbankpa.com/>.

A Message Continued from Page 1

of the former hospital site (our PACP site) to the Moshannon Valley Emergency Medical Services, and Lot #3 of the Regional Business Park to Sewer Catt, LLC. It is important to point out that there are still 12.4 acres of land still for sale at the former hospital site. The Regional Business Park, once publicly called a “field of dreams,” now has just two of fifteen lots remaining, Lots #6 and #11. Our two business park properties are represented by Ryen Realty.

In our last edition of this newsletter, we wrote a piece about how the banks were helping area businesses apply for the array of funding opportunities created by state and federal government. We inadvertently forgot to include CBT Bank, a Division of Riverview Bank. Very astute CBT employee Kathy Collins spotted the omission immediately. For this reason, we have included a guest piece in this edition of our newsletter about CBT Bank. Reading through that piece, you will see that their professionals processed over 1,200 loan applications for businesses to help them survive this pandemic. Thank you CBT/Riverview for your service to this region.

Sewer Catt

Continued from Page 1



John Moore of Sewer Catt, LLC and Attorney Dave Thompson wrap up the signing of the paperwork for the purchase of land in the Moshannon Valley Regional Business Park.

“We are pleased to be constructing a new facility in the Business Park,” said John Moore of Sewer Catt. “The location of the business park fits our needs as we work throughout the Philipsburg, Centre and Mifflin County regions,” he said.

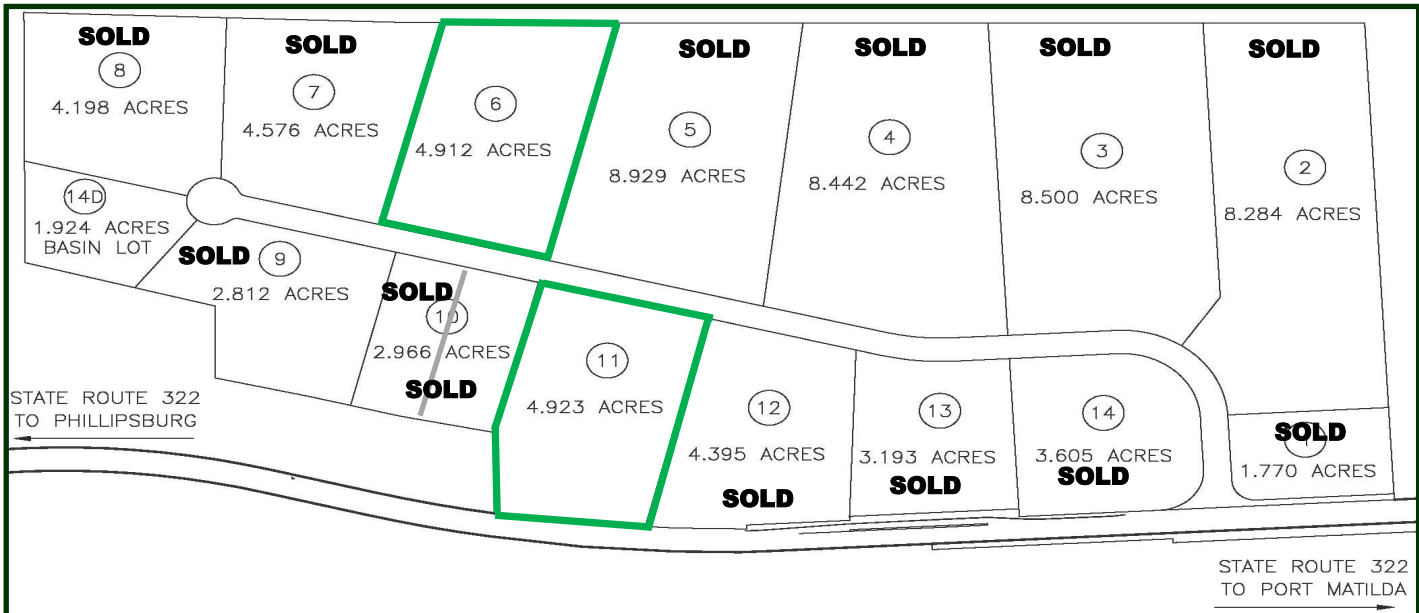
“The Moshannon Valley Economic Development Partnership first agreed to sell the land to Sewer Catt

back in January,” said Steve Lyncha, President of the Partnership’s board of directors. “With the onset of the COVID-19 virus, it was important that we work with Sewer Catt officials to extend the closing date to September to give the buyer time to sort through the impact of the virus on business,” he said.

“The sale of land to Sewer Catt now leaves the Partnership with just two lots remaining in our Moshannon Valley Regional Business Park,” said Stan LaFuria, Executive Director of the Partnership. “Not bad for a 15 lot business park that was once called a “field of dreams” by an area resident”, he said. “We have those two lots still available and also approximately 12 acres still for sale in the Philipsburg Area Commerce Park. We were pleased to recently sell 2.3 acres at that site to the Moshannon Valley Emergency Medical Services. The sites still for sale are being represented by Ryen Realty,” he said.

Sewer Catt, LLC is a sewer and drain cleaning, service and repair business. The company also does excavation work when required.

Two Lots Available in the Moshannon Valley Regional Business Park Lot #6 and Lot #11



Represented by Ryen Realty, LLC

IN THE SPOTLIGHT



HRENKO INSURANCE
AGENCY INCORPORATED
962 Tyrone Pike
Philipsburg, PA 16866
814.342.5204
www.hrenko.com
AUTO • HOME • BUSINESS • LIFE



800-874-8341
www.choicebumper.com
100 North 9th Street
Philipsburg, PA 16866

BODY PANELS
WHEEL LINERS
BUMPERS
BEDLINERS
LIGHTS
MIRRORS
STARTERS
DOORS
FENDERS
FUEL LINES
GAS TANKS





SCREEN PRINTING & EMBROIDERY
TEAM APPAREL
JERSEYS, HATS, WINDBREAKERS & BAGS
FAN APPAREL
T-SHIRTS, SWEATSHIRTS, HOODIES
1/4 ZIPS & HATS
SIGNS
BANNER, YARD SIGNS, MAGNETIC
SIGNS, DECALS, FLAGS & MORE

ROCKINV.COM
342-1611- INFO@ROCKINV.COM



WASSON INSURANCE AGENCY
2440 Commercial Blvd.
State College, PA 16801
Personal Service by: AMY J. HOUSER, CPIA
amyjhouser@yahoo.com
Office: 814-237-5378
Cell: 814-880-2531
Toll Free: 866-936-0527
www.wassonins.com



5330 MORRISDALE/ALLPORT HWY
ALLPORT, PA. 16821
814-345-1128
Mary Kay Beveridge
OWNER
MRCATERING16@G-MAIL.COM

DRIVING RANGE

BIG ROCK SWING & PING I.I.C.
OPEN DAWN TO DUSK
Fully Automated
10 pads plus grass area!
Club rentals available during store hours!

Route 53 Moutzdale-Madera Hwy.
Next to B & G Trees and Nursery
378-5600

\$5 Large Bucket (72 Balls)
\$3 Small Bucket (36 Balls)

MVEDP Partners with Centre County 9-1-1 to Distribute PPE to Area Businesses

The Moshannon Valley Economic Development Partnership announced that it has a large quantity of personal protective equipment to give to business owners free of charge. The Centre County 9-1-1 office, through Centre County government, has made the PPE available to businesses in the Philipsburg region in the on-going battle against the COVID-19 virus.

“During the week of September 7th, we received a call from Jeff Wharran, Director of the Centre County Office of Emergency Services asking if we would assist with the distribution of the PPE here in the Philipsburg area,” said Stan LaFuria, Executive Director of the MVEDP.

“We believe that it is our duty to distribute the PPE as this is just another way that we can assist the business community,” he said.

The PPE that is available includes masks, shields, hand sanitizer, rubber gloves, and a small quantity of thermometers.

Business owners or representatives should contact the Partnership office at 342-2260 to arrange to secure the PPE. The PPE is located at the Moshannon Valley Enterprise Center facility, 200 Shady Lane, in Rush Township.

MVEDP Board of Directors

BOARD MEMBERS

Steve Lyncha, President
 Bryan Bennett, 1st Vice President
 Dustin Minarchick, Vice President
 Wanda Ryen, Vice President
 Laura Koschko, Treasurer
 Jim Pollock, Assistant Treasurer
 Rusty Christoff
 Jeff Herr
 Bill Jones
 John Shimko
 Karen Blair
 Tom Scott
 Dr. Robert Steward
 Fritz Smith
 Gene Wardo

DATE TERMS END

November 30, 2020
 November 30, 2020
 November 30, 2020
 November 30, 2021
 November 30, 2020
 November 30, 2021—Term Expires
 November 30, 2021—Term Expires
 November 30, 2022
 November 30, 2022
 November 30, 2022
 November 30, 2022
 November 30, 2021—Term Expires
 November 30, 2020
 November 30, 2021
 November 30, 2022

Enter Ben Franklin's \$50,000 Big Idea Contest Before September 21, 2020!

Ben Franklin Technology Partners, an award-winning, tech-based economic development program, offers emerging entrepreneurs the opportunity to dip their toe in the startup world by participating in their fun, risk-free BIG IDEA contests. In the past few years – maybe because of the popularity of the TV show, Shark Tank, there has been a growing interest in pitch competitions by the private sector, economic development professionals, and just regular folks who have an idea for an innovation that could turn into a business opportunity.

But, why do most people enter Ben Franklin's BIG IDEA Contest? Because they want to win! Since the contest's inception, more than \$1 million in cash prizes have been awarded all over the state of Pennsylvania. Winning up to \$50,000 will go a long way in helping infuse a startup with some much-needed cash. But, getting feedback from a panel of business experts is just as valuable. The experience gained, the training offered, and the contacts

made are worth every bit as much as the prize money.

For this BIG IDEA Contest, Ben Franklin Technology Partners is looking for tech innovators or small manufacturers located in the counties of **Indiana, Jefferson, Clearfield, and Cambria** that are developing new products, processes, or software applications. If you have not previously received Ben Franklin funding, you plan to commercialize your innovation, and you currently do not have more than \$500,000 in sales, you are eligible to apply at BIGIDEA.BenFranklin.org. But don't wait! The deadline is **September 21, 2020 by 5:00 pm!**

For more Information: Jill Edwards (717) 948-6625 or jilledwards@psu.edu

Moshannon Valley Enterprise Center Renovation Project Now Completed



During the week of September 7th, a sidewalk reconstruction project was completed at the MVEDP's Moshannon Valley Enterprise Center on Shady Lane in Rush Township. This project was the final component of the MVEC Renovation Project which began in 2018.

ovation Project which began in 2018.

With the inclusion of the \$18,500.00 sidewalk project in the overall MVEC renovation project, the total cost of all of the improvements was \$223,880.48. Roof replacement, asphalt repairs and replacement, new concrete floor work, sewer line replacement, lighting, and other miscellaneous work items were completed. The result is a more marketable building that will continue to serve the area for many years to come.



MOSHANNON VALLEY ECONOMIC
DEVELOPMENT PARTNERSHIP
200 SHADY LANE
PHILIPSBURG, PA 16866

MVEDP Board of Director Election

The MVEDP board of directors and staff is working now to prepare for the 2020/21 annual board of directors election. Five (5) board members are now up for re-election: Laura Koshko, Bryan Bennett, Steve Lyncha, Dustin Minarchick, and Dr. Bob Steward, Jr. These five board members have indicated their interest in continuing to serve this region through their involvement in the Partnership. Those elected to the board will have a three-year term.

The MVEDP is seeking candidates to run on the ballot. Anyone that is interested in running for a seat on the board should contact the office on or before September 25th. Once the ballot is in place, it will be mailed to all of our members. We do NOT expect any difficulty with the postal service regarding the return of the ballots!

Thank You Continued from Page 3

RC Bowman, Inc.
Rusty's Oil & Propane
Sherwin-Williams

The GEO Group, Inc.
The Juniata Valley Bank
Tom Scott
Vaughn Environmental
Services, Inc.
Walter Hopkins Company