

MOSHANNON VALLEY PROGRESS

Spring Issue - May 2019

Volume 18 Issue 1



MVEDP 31st Annual Awards Luncheon

Inside this issue:

MVEDP 31ST Annual Awards Luncheon	1
A Message from the Executive Director	3
PMG Pennsylvania and the MVEDP Close on Land Sale	3
MVEDP Renews Commitment to the PRC	3
UMI Performance Receives Loan from MVEDP	5
New Members	6
Thank You Members	6
Cretek Sets Up Shop at MVRBC	7
Travel to Work Data Discovered Last Year Very Revealing	7
Centre County Updating Long Range Transportation Plan	7
Taxes Paid by MVRBP Businesses Through 2018	8



Front Row: Luther Gette, Philipsburg Historical Foundation, Josh Helke, Owner/Founder of Organic Climbing, Mark Seinfeld, Philipsburg Historical Foundation, Mayor John Streno, Back Row: Jeff Sleigh, Philipsburg Historical Foundation, Steve Lynch, President of the MVEDP Board of Directors

At a luncheon attended by approximately 100 local leaders and held Friday, April 26th, the Moshannon Valley Economic Development Partnership honored the Philipsburg Historical Foundation and Josh Helke of Organic Climbing, LLC.

Awards Presented to: Philipsburg Historical Foundation-Community Service Award, Josh Helke, Organic Climbing, LLC-Small Business of the Year.

Stan LaFuria, President of the Partnership said that it was in 1988 that the Partnership first began presenting awards to deserving area residents representing organizations and businesses in the Moshannon Valley. Award recipients are people who are making the Philipsburg/

Moshannon Valley region a great place to live and work.

LaFuria said that in many cases, the people who have been recognized are volunteers, volunteers who are working to strengthen both their organizations and the community. A stronger community makes the area more attractive to businesses.

The first Partnership award presented was the award for outstanding service to the community and that award was to the Philipsburg Historical Foundation.

The Philipsburg Historical Foundation was the brainchild of the late J. Clair Simler, who devoted a great deal of his

Continued on page 2

Special points of interest:

- Free Advertising In The Spotlight
- Membership Renewals

MVEDP 31st Annual Awards Luncheon (Continued from Page 1)

time to community service and had a lifelong interest in Philipsburg history.

In 1947, Clair was a member of, and treasurer for, the committee which planned the Philipsburg Sesquicentennial (150 year) celebration. Interest in establishing a historical society in Philipsburg began that year but the Philipsburg Historical Foundation was not officially established and the first board elected until 1954.

The organization was formed to see to the preservation of the historic Union Church—which was owned by the borough of Philipsburg but since 1954, has been maintained by the Foundation.

The organization soon thereafter started receiving donations of memorabilia. Mr. Simler decided that Philipsburg needed a museum and research center and devoted many hours to the setting up of a local facility. In 1962, the dream became a reality and Mr. Simler, who had served four terms as the President of the Philipsburg Historical Foundation, became the organization's first curator and, over the years, answered requests for genealogical information from people all across the United States.

In 1997, Philipsburg's Bicentennial year, the Philipsburg Historical Foundation undertook the restoration of Philipsburg's oldest place of residence---the 2 and a half story log dwelling was built in 1807 by town pioneer John Henry Simler (the Simler House on Second Street).

A local couple long interested in local history, Robert and Barbara Bezilla, purchased the house in November 1997 and donated it to the borough. The borough continues to own it; the Philipsburg Historical Foundation administers it in essentially the same way the Old Mud Church is operated.

The house is used for tours and display. In 1997, Barbara Bezilla, a Philipsburg Historical Foundation trustee emerita and a Simler descendant, said few people in town realize the building's significance. We knew what was here and wanted to

save it. Mark Seinfelt, a Simler descendant four greats and a grandfather down the line from the builder, was the project's chairman and chief grant-writer. He is a former President of the PHF and its current Vice President.

Current Foundation President Susan Allport-Snyder and current Curator Luther Gette say that Foundation is as active today as it ever was. Mr. Gette says that in recent years members of the society were involved in researching and erecting the Moshannon Valley Veterans' Memorial and noted that, on his deathbed in July 2000, J. Clair Simler requested that the town of Philipsburg erect such a memorial.

Mrs. Allport-Snyder says that the present is a challenging and exciting time for the society as the Foundation just recently assumed ownership of the Moshannon Building in which its museum is housed, thanks to the philanthropy of longtime Foundation member the late Walter Swoope, who passed away last year.

She also expressed her gratitude to all the many members of the Foundation's board who have contributed to the success of the society over the years.

Stan LaFuria, Executive Director of the Partnership noted that in the early 1990s, the work of Clair Simler at the Historical Foundation saved the Partnership between \$7000 and \$10,000. The Partnership decided to develop a 16 acre site located next to the Enterprise Center facility. Shady Lane needed to be extended and the water and sewer infrastructure. Located next to the site was water and swamp land from the Moshannon Creek.

The Partnership pursued state loans and grants for the project and was required to be involved with a certain state agency that wants to be sure that any development is not negatively impacting sites of historical significance. For the Partnership to meet their requirements, a consultant would have to be hired at an estimated cost of approximately \$7,000 to \$10,000.00.

But the Partnership had the idea to go and talk to Mr. Simler about the site. He researched the site and determined that there used to be a baseball field there with a trolley car to bring people to the

Continued on Page 5

A Message from the Executive Director



The Partnership was very pleased to honor Organic Climbing, LLC and the Philipsburg Historical Foundation at our luncheon held on Friday, April 26th. These are two very deserving award winners. Last year, we honored Ricotta Jewelry for 50 years

in business, the Philipsburg-Osceola School District, Rush Township and Centre County government for their support of our KOZ tax break initiatives, and Philipsburg Borough and Decatur Township for their long-time support of the \$2.9 million in housing rehabilitation programs that we administered. There is more about the work of the PHF and the success of Organic Climbing on pages 1, 2 and 5 in this newsletter.

The Partnership now has 16 board members with the addition of Fritz Smith, Executive Director of the Central PA Convention and Visitors Bureau. For the first time, we have four women on the board at one time including: Karen Blair, Laura Holden, Holly Thompson, and Wanda Ryen. I happened to mention at the luncheon that of our 16 board members, 8 have been the president of the Partnership. That's a lot of experience and leadership for a small organization like ours. We have good folks on the board who want good things for this area and the staff is pleased to be working with them.

We were recently contacted by the Centre County Planning Department and the Centre Region Metropolitan Planning Organization about transportation needs in this area. They want to know what we think about our roads, bridges, traffic issues, and what our transportation needs are. The first thought that always comes to my mind is the previously proposed "Corridor O" project,

Continued on Page 6

PMG Pennsylvania and MVEDP Close on Land Sale



In 2002/03, the MVEDP entered into a lease agreement with Sinterstahl GmbH of Germany to have this powdered metals manufacturing company locate to the Regional Business Park. The MVEDP worked to secure state loans for this company totaling \$2.0 million. The agreement was set up that after the financing had been paid off in 15 years, the company would pay the MVEDP for the land, at a cost of \$189,700.00. PMG officials were highly cooperative in working with the MVEDP to acquire the property. Just after the final payments were made on the state loans, the property sale was closed.

MVEDP Renews Commitment to the PRC

The MVEDP's board of directors recently voted to renew its commitment to the Philipsburg Revitalization Corporation. The MVEDP has been working with the PRC on the revitalization of the downtown area since 1997. For 2019, the commitment will consist of funding to assist the PRC in resolving a previous commitment, monthly cash allocations, a commitment of MVEDP staff to assist with PRC projects, and incentive money to match funds raised by the PRC.

In late 2018, it was discovered that issues had developed with the paid management of the PRC. The MVEDP wishes to recognize Eric Kelmenson, Faith Maguire, and Kathy Kalinosky for their volunteer efforts to keep the PRC in operation.

IN THE SPOTLIGHT



315 Link Road West Decatur PA 16878 • 814-342-0884 or 1-800-982-3375 (PA only)

The CIU #10 offers the following services to Centre, Clearfield and Clinton Counties:

- Customized educational services to business and industry
- Special Educational services
- Curriculum and Instruction liaison with Pennsylvania Department of Education
- Charter School liaison
- Non-Public School services
- Galaxy Arts in Education
- Early Intervention/ Preschool Services
- GED instruction and testing

Check our complete listing of services online at www.ciu10.org

Delivering results.
Exceeding Expectations.



Keller Engineers is a highly skilled team of expert civil and structural engineers and surveyors dedicated to providing exceptional service through innovative design.



Hollidaysburg, PA • 814.696.7430
State College, PA • 814.231.2925
www.keller-engineers.com



CRAFTED IN PHILIPSBURG, PA.

Employing local aluminum welders, fabricators, & general labor. 200 Shadylane Drive
1 (800) 935-4002
WWW.DIAMONDBACKCOVERS.COM



DRIVING RANGE

BIG ROCK SWING & PING I.I.C.

OPEN DAWN TO DUSK
Fully Automated

10 pads plus grass area!

Club rentals available during store hours!

Route 53 Houtzdale-Madera Hwy.
Next to B & G Trees and Nursery

\$5 Large Bucket (72 Balls)

\$3 Small Bucket (33 Balls)

378-5600

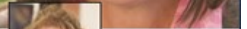
Vaux Electronics

814-342-1611

verizon wireless Service Provider

DIRECTV DISH NETWORK SIRIUS SATELLITE RADIO

Now I understand
Investment Management
after meeting with Vicki.



Vicki Myers

Vice President & Trust and Investment Management

Call Vicki Myers at CBT Financial & Trust Management today and find out why **Starting A Trust Begins With Trust.**

- ◆ Investment Management
- ◆ Estate Planning
- ◆ Financial Guidance



cbtfinancial.com
1-888-765-7551

Not FDIC insured, not guaranteed by the bank or government agency, not a bank deposit and may lose value.



NEW STORE HOURS
M-TH 9:00-6:00
FRI-SAT 9:00-9:00
814 342-1800

Blaise Alexander
CHEVROLET • BUICK

113 WALTON STREET, PHILIPSBURG, PA 16866

800-462-1519 OR 814-342-3223

SALES HOURS

MON., TUES., THURS., FRI.
9:00 – 8:00
WEDNESDAY & SATURDAY
9:00 – 5:00

PARTS HOURS

MONDAY-FRIDAY
8:00-5:00
CLOSED SATURDAY

WWW.ALEXANDERPHILIPSBURG.COM

TAKING DEALS THE OTHER GUY'S WON'T!!

GUARANTEED!!

Hrenko Insurance

Agency Incorporated

Serving the Moshannon Valley for over 31 years

Auto - Home - Business - Life

www.hrenko.com
(800) 696-8097

962 Tyrone Pike - Philipsburg

MVEDP 31st Annual Awards Luncheon (Continued from Page 2)

ball games. There was nothing of major historical significance to the site, so the Partnership packaged up the information and sent it to Harrisburg and this work was accepted saving the Partnership the consultant fee.



Organic Climbing, LLC

The Partnership's Small Business of the Year award was presented to Josh Helke, owner of Organic Climbing LLC. Mr. LaFuria noted the importance of our proximity to the State College/Penn State region as twenty-one businesses have located to our area from that region. Mr. Helke and his wife moved to the State College area so that his wife could take a teaching job at Penn State. They moved there from Minneapolis, Minnesota. Josh is a native of Minnesota where he learned to rock climb on the property where he grew up.

Mr. Helke is an avid rock climber, or boulderer. He noticed years ago that crash pads and other products for boulderers were cheaply made and didn't hold up well. He taught himself to sew and he started making crash pads back in 2003; he was set on making better products here in the United States, much better than the lower cost, lower quality products that were coming here from overseas.

It was in October of 2010 that Josh first got set up within the Partnership's Regional Business Center located at the Business Park. By 2012 the company had grown from 3 employees to 7.

The company makes crash pads, backpacks, chalk bags, jeans and other products too, for customers

who are located throughout the world. The majority of sales are generated on-line, and the high quality of the materials used in the manufacturing process is what has made Organic Climbing such a terrific success.

It was last year when construction began on his new 17,000 sf. manufacturing facility on Lot #5. The Partnership was able to help Mr. Helke secure a 2% loan through the PA Industrial Development Authority.

The company currently has 16 employees and continues to grow.

UMI Performance Receives Loan from MVEDP



UMI Performance

UMI Performance was recently approved for a \$65,000 loan from the Partnership's Revolving Loan Fund Program. The loan was used by UMI to purchase a property located in Chester Hill. This was the third loan approved to UMI to assist them with their growth.

Ryan Kirkwood is the owner of UMI Performance and the company is located in Rush Township in the facility formerly occupied by Shain Shop/Bilt. The company is a manufacturer of replacement automobile suspension parts and was first established in 2003.

The Partnership is pleased to be able to assist companies with its Revolving Loan Fund program. In this case, the loan will enable UMI Performance to expand its manufacturing capabilities because of the additional space that will be available at their Rush Township facility. Job creation and job retention are very important elements of the RLF program.

New Members

Fulton Bank

2009 North Atherton Street Ste. 300
 State College, PA 16803
 Phone: 814-234-1864
 Contact: Lana Walker, VP
 Www.fultonbank.com
 lwalker@fultonbank.com

Stahl Sheaffer Engineering, LLC

301 Science Park Road, Suite 333
 State College, PA 16803
 Phone: 814-689-1562
 Contact: Leah Williams,
 Marketing Coordinator
 www.sse-llc.com
 lwilliams@sse-llc.com

A Message from the Executive Director

Continued from Page 3

the four-lane highway that would link I-99 in Centre County to I-80 in Clearfield County. The Corridor O effort began in the Fall of 1999, and by the time that it was over, approximately \$25 million was spent on the Corridor O studies. With the traffic that makes its way through Philipsburg on a daily basis from Routes 322, 53, 350 and 504, maybe it's time to resurrect the Corridor O discussion. We ask that if anyone has input to offer on our transportation needs, please contact our office.

Thank You!

The Moshannon Valley Economic Development Partnership thanks you for your support of our economic & community development efforts!

Renewals 1st Quarter

American Roofing, Inc.
 Andrew J. Tocimak Agency, LLC
 Central PA Community Action Inc.
 Central Steamer
 Centre Foundation
 ChemStation-Happy Valley
 Clearfield County EDC
 Clearfield Wholesale Paper
 David Reid, Inc.
 Gary Turner
 Geo Tech Engineering, Inc.
 Glendale Industrial Development Association
 Hughes Bohley Engineering, LLC
 Hurwitz Real Estate
 Konecranes
 M&T Bank
 Mary Kay's Catering
 Moshannon Valley EMS
 Penn Highlands Clearfield
 Philipsburg Borough
 Providence Engineering Corp.
 Ryen Realty
 Samuel J. Lansberry, Inc.
 Spherion
 Stone Valley Construction, LLC
 The Juniata Valley Bank
 TMM Data
 Wasson Insurance Agency, Inc.
 Windy Hill Village of the Presbyterian Home

Creotek, LLC Sets Up Shop at the Regional Business Center



Clay Passarelli, originally of the Bald Eagle Valley, has set up his new manufacturing business within the Partnership's Moshannon Valley Regional Business Center. Creotek is a manufacturer of parts used in ankle/bone surgeries. The company is now renting space that was previously occupied by Organic Climbing, the company that went on to construct their own manufacturing facility on Lot #5 in the Business Park. The MVEDP is hopeful that Creotek, LLC will be the next company to leave one of our buildings and build their own facility here in the Moshannon Valley region.



Travel to Work Data Discovered Last Year Very Revealing

Late last year, the MVEDP staff was working with Liz Lose of the Centre County Planning Department to find certain data that was needed for a federal grant application. One data item that was revealed concerned Travel to Work. This is data about the travel patterns of people getting to and from their jobs. The data targeted residents of the Moshannon Valley region and that region includes Philipsburg and Rush Township in Centre County, and 21 small municipalities in eastern Clearfield County that also comprise the Moshannon Valley region.

It was revealed that **2,765 workers commute OUT** of the Moshannon Valley to work each day. But, it was also revealed that **2,639 workers commute IN** to the Moshannon Valley to their jobs each day.

Centre County Updating Long Range Transportation Plan

The MVEDP staff was recently notified that the Centre County Metropolitan Planning Organization is in the process of updating the Long Range Transportation Plan for the county. Staff of the Centre County Planning Department and the Centre Regional Planning Agency in State College are working to identify the long-range transportation needs out to the year 2050.

The small borough of Philipsburg receives more than its fair share of traffic every day. Traffic from routes 322, 504, 350 and 53 all converge within the borough. Is this high volume of traffic negatively impacting the quality of life here? Air and noise pollution? Some might say that the traffic is needed to support businesses along these routes and to leave this situation the way that it is.

The MVEDP will soon be meeting with officials of the county and regional planning offices to talk

Continued on Page 8

Taxes Paid by MVRBP Businesses Through 2018

In the late 1990s, the Partnership purchased the 77 acres (two parcels) that it developed into the Moshannon Valley Regional Business Park. The taxes that were being paid on those two parcels of land was \$1,300 per year. Mark Kellerman of the Centre County Tax Assessment Office identified that through the end of 2018, \$1,164,012.13 in real estate taxes had been paid by the businesses located within the Business Park. The Keystone Opportunity Zone (KOZ) designation has been instrumental in helping the Partnership to sell the land to interested buyers. Once the KOZ designation is expired, the \$1.1 million in taxes paid will grow significantly which will be a boon to the Philipsburg-Osceola School District and Centre County. Along with Rush Township, these three taxing entities have been dedicated partners with the MVEDP to stimulate new development at that site.

Centre County Updating Long Range Transportation Plan Continued from Page 7

about the transportation needs here in this area. The aim is to identify the biggest transportation needs in this area, to determine if there are in fact livability issues here due to excessive traffic, and are there anticipated changes in land use/development due to the existing or proposed transportation system?

We ask that if anyone in the area is interested in participating in the meeting with these transportation planning officials, to please contact our office at 342-2260.

Space Available at the Enterprise Center

Suite 130A	11,000 sf.
Suite 130B	15,000sf.
Suite 190	10,000 sf.
Suite 140	1,000 sf.
Suite 113	500 sf.



MOSHANNON VALLEY ECONOMIC DEVELOPMENT PARTNERSHIP
200 SHADY LANE
PHILIPSBURG, PA 16866