



**Special points  
of interest:**

- *Free Advertising*
- *In The Spotlight*
- *Save the Date*

**A Message from  
the Executive Director**



The first item of business that I want to cover in this message is our 25<sup>th</sup> annual awards luncheon event which will be held on April 19<sup>th</sup>. On page 8 of this quarterly news-

letter is the announcement of that April 19<sup>th</sup> event. We are pleased to offer our members and supporters an opportunity to have lunch on the MVEDP as a show of our appreciation for your support over the past twenty-five (25) years. The MVEDP is celebrating its 25<sup>th</sup> anniversary this month!

Continued on Page 6

**ATA Launches Clearfield-Centre Connector Service**

The Centre Area Transportation Authority (CATA) is pleased to announce that the Area Transportation Authority of North Central Pennsylvania (ATA), which serves Clearfield County, has launched a regional commuter bus service, the Clearfield-Centre Connector, linking Clearfield, Philipsburg and State College.

The service, will run Monday through Friday and be operated by

Continued on Page 7

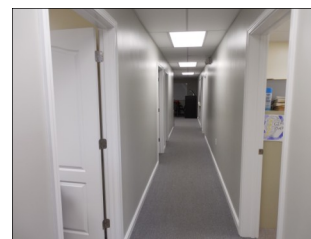
**Company Locates in MVEDP's  
Regional Business Center**

Finger Lakes Chemical, Inc. is the newest business tenant of the MVEDP's Moshannon Valley Regional Business Center. Also doing business as Castle Products, this company is headquartered in Rochester, New York and is a distributor of automotive products and lubricants.

These two businesses have been in our area for just over twenty years. Derek Henderlong is the manager of the company's central-Pennsylvania operations.

Continued on Page 7

**Suite B Available at the  
Regional Business Center**



The MVEDP has one remaining space available in the Re-

gional Business Center: Suite B which is 3,686 square feet. This space contains a first class office area as well as an area that could be used for manufacturing, warehousing or distribution.

Continued on Page 3

**Inside this issue:**

Message from the Executive Director	1
Company Locates in MVEDP Regional Business Park	1
ATA Launches Clearfield-Centre Connector Service	1
Suite B Available	1
Finders Fee Paid	2
Penn National Insurance	2
Housing Rehab	3
Get Paid Helping the MVEDP	3
Support Area Organizations that are Involved in Fundraising	6
MVEDP to Host Business After Hours	8

MOSHANNON VALLEY ENTERPRISE  
CENTER SPACE AVAILABLE



- Space to accommodate manufacturing, distribution, warehousing or other uses
- Air conditioned offices and conference room available; 50% of large area also has air conditioning
- One-quarter mile from PA Rt. 322, one mile east of Philipsburg
- 10 miles to I-99 and to I-80
- Great lease rates, flexible leases
- Space can be subdivided

Contact: Stan LaFuria, Exec. Dir  
814-342-2260  
Email: slafuria@mvedp.org

## Finders Fee Paid!



The MVEDP is pleased to announce that a FINDERS FEE has been paid to Josh Helke, owner of Organic Climbing LLC located within the Partnership's Moshannon Valley Regional Business Center. Josh convinced Derek Henderlong to locate Finger Lakes Chemical/Castle Products to Suite D of the Center. We want to remind our members that we will pay a 5% finders fee to anyone who brings us a new business tenant or a buyer for the land still available in the Regional Business Park.

# Penn National Insurance

Does your business insurance earn you dividends? Purchase your business insurance through Penn National Insurance, and depending on the total group premium and total claims experience, you could earn an annual dividend.

Eligible lines\* offered through this program include:

- Businessowners
- Commercial auto
- Property
- General liability
- Package policies
- Inland marine
- Workers' Compensation

### Program Features

- All-lines dividend (excluding umbrella and bonds). Dividend payments are based on total group program premium and claims experience of eligible lines. As program grows, so does dividend potential.
- Enhanced coverages on auto, businessowners, property, workers, compensation, and general liability—giving you added protection at no additional cost;
- Equipment breakdown coverage automatically included with businessowners and property policies
- Information and services to help reduce losses—the payoff is greater dividend potential
- Outstanding, local claim and customer support service

\*Subject to individual risk characteristics, loss experience and underwriting guidelines.

What to know more? Contact Charles Jones Insurance Agency at 814-342-1880 or visit PennNationalInsurance.com.



PENN NATIONAL  
INSURANCE

# Housing Rehab



Staff of the MVEDP is currently taking applications from homeowners interested in participating in the Phase III Eastern Clearfield County housing rehabilitation program. The project targets the communities of Decatur, Morris and Cooper Townships, Chester Hill, Osceola Mills, and Wallaceton Boroughs.

The MVEDP's housing rehabilitation program provides conditional grant assistance to homeowners resulting in a safe and sanitary dwelling unit. As a minimum, such rehabilitation shall include the following: exterior and interior requirements, electrical, heating, and plumbing system upgrades.

Homeowners must be income eligible to participate in the program. Eligibility guidelines can be secured by contacting Sherrie Beals of the MVEDP at 342-2260 or applications can be downloaded from our website [www.mvedp.org](http://www.mvedp.org).

## Suite B Available

Continued from Page 1



The office area has eight separate offices. A kitchen/break room facility is also located within the space. A finder's fee will be paid to anyone who assists the MVEDP in bringing a business to this rental space.

## Get Paid for Helping the MVEDP!

The MVEDP helps the private sector to generate new employment opportunities by providing sites and building space to businesses. Anyone who brings a lead (business owner) to the MVEDP that buys a lot in our Business Park, or rents space in either of our two multi-tenant buildings **will be paid a 5% finder's fee**. For example, if a new lease is signed and \$30,000 in rent will be paid over a two-year period, the "finder" will be paid a lump sum fee of \$1,500.00! The MVEDP considers everyone in the community to be its partner in working to enhance the economy of this region. Bring us a new business tenant or business owner that purchases land in our Regional Business Park and **GET PAID!**

 **Central Insurers Group**  
Charles A. Jones Agency



*Insuring Local Businesses for Over 50 Years. Call Today for a Quote!*

20 S. Front St., Philipsburg, PA 16866  
Phone (814) 342-1880  
Fax (814) 342-2992  
[wjones@centralinsgrp.com](mailto:wjones@centralinsgrp.com)  
[www.centralinsgrp.com](http://www.centralinsgrp.com)

**Schedule your next business or group event today.**  
**We offer a customized banquet menu and party packages tailored to suit your needs.**

141 Enterprise Drive - Philipsburg  
(814) 342-PINS (7467)  
[www.movalleysuperbowl.com](http://www.movalleysuperbowl.com)



## CONKLIN'S CORNER ANTIQUE & GIFT BARN



20 PLUS DEALER CO-OP ☆ NEW ANTIQUES ARRIVING DAILY  
COINS & CURRENCY ☆ U.S. MILITARY MUSEUM

### Huge Country Gift Shop

YORK Borders & Wallpaper ★ Boyds & Gund Bears  
Mats & Runners ★ Candles ★ Berries ★ Dolls  
Jute Earth Rugs ★ "Klipper Kanvas" ★ Handbags  
Floral Pillows ★ Flowers ★ Rose Hips ★ Melting Pots  
Valances ★ Wall Quilts ★ Baskets ★ Crafts, etc.

*New Gift Items Arriving Daily!*

Rt. 350, 670 Tyrone Pike  
Philipsburg, PA 16866  
**342-0650**

Hours:  
Mon-Sat 10am-6pm, Sun Noon-4pm



# IN THE SPOTLIGHT

**CMP**  
CHRISTOFF MITCHELL PETROLEUM, INC.  
*"Fast, Friendly, Dependable."*

1-800-242-1317  
814-342-3620  
Fax 814-342-3737

Quality Heating Oil, Bioheat®, Propane, HVAC,  
Power Fuels, Biodiesel®, Fleet Fueling, Oil and Lubricants

[www.christoffmitchell.com](http://www.christoffmitchell.com)

2719 WALTON STREET, P.O. BOX 669, PHILIPSBURG, PA 16866

*Come in, we're*  
**OPEN**

**When it comes to business loans,  
We're open for business.**

AmeriServ® is actively making business loans.  
1-855-OPEN-4-LOANS (1-855-673-6456)

Member FDIC

Member SBLF  
SBLF Small Business Lending Fund

*Here to Serve*  
**AMERISERV**  
BANK®

734 S. Atherton • 1857 N. Atherton • State College  
[www.AmeriServ.com](http://www.AmeriServ.com)

**Not all investment advisors can see the forest for the trees.**

At Clearfield Bank & Trust, our team of knowledgeable, professionals, can guide you along the path of financial security with investments, trust administration, retirement accounts, and financial advice.

Just one more reason why Clearfield Bank & Trust is More Than A Bank.

19 Irwin Drive Ext.  
Philipsburg, PA 16866  
**814-342-5750**

[www.cbtfinc.com](http://www.cbtfinc.com)

**CLEARFIELD BANK**  
A TRUANT COMPANY

Investment products are Not FDIC insured, not guaranteed by the bank or any government agency, are a bank product and may lose value.

**HOME NURSING AGENCY  
HEALTHCARE**

**REMARKABLE CARE,  
HAND DELIVERED.™**

Services in Your Home and Community

- Home Health Care
- Physical, Speech, and Occupational Therapies
- Hospice Care
- Private Duty Home Care
- WIC Nutrition Program
- Nurse-Family Partnership®
- Behavioral Health Care for Children and Teens

Anyone can make a referral,  
24 hours a day, 7 days a week.

**1.800.445.6262**  
[www.homenursingagency.com](http://www.homenursingagency.com)

**jazzercise**

Classes held at ProCare Health and Fitness  
Visit [www.jazzercise.com](http://www.jazzercise.com) for a class schedule  
or contact Susan Lingle, Class Owner  
**(814) 496-8275**  
[jazzersues@gmail.com](mailto:jazzersues@gmail.com)

COME JOIN OUR FAMILY OF READERS AND ADVERTISERS

**PHILIPSBURG JOURNAL**  
216A Presqueisle Street, Philipsburg, PA 16866  
Phone: (814) 342-1320 Fax: (814) 342-1390  
Email: [journalnews1@verizon.net](mailto:journalnews1@verizon.net)  
**G. KERRY WEBSTER - EDITOR**

*Hrenko*  
**Hrenko Insurance**  
Agency Incorporated

*Serving the Moshannon Valley for over 31 years*  
**Auto - Home - Business - Life**

[www.hrenko.com](http://www.hrenko.com)  
(800) 696-8097  
962 Tyrone Pike - Philipsburg

**DIXON COMPUTER SERVICES**  
..... <http://www.dixoncom.com>

PC TUNE-UPS | NETWORKING | COMPUTER REPAIR  
UPGRADES | VIRUS, SPYWARE & ADWARE REMOVAL

**DCS**

Email: [info@dixoncom.com](mailto:info@dixoncom.com)  
Phone: 814-287-1038

357 KEYSTONE HILL ROAD ♦ PHILIPSBURG, PA 16866

Zero Data Loss Guarantee

**Choice Bumper**

**WE HAVE YOU COVERED  
FROM BUMPER TO BUMPER**

100 North 9th Street  
Philipsburg, PA 16866  
[sales@choicebumper.com](mailto:sales@choicebumper.com)  
[www.choicebumper.com](http://www.choicebumper.com)

**800-874-8341**  
**814-342-5579**

**Converse Consultants**  
Geotechnical Engineering  
Environmental & Groundwater Science  
Inspection & Testing Services

[www.converseconsultants.com](http://www.converseconsultants.com) 814-234-3223

REMODELING COMPLETE PROJECTS  
FINANCING AVAILABLE

**WIMER CARPENTRY & MASONRY**

INSURED MASTER CRAFTSMEN

**(814) 765-3038** Clearfield, PA 16830



**Ricotta Jewelry & Gifts**  
 Since 1968  
 "Your Watch & Jewelry Repair Center"  
 105 North Front Street, Philipsburg, PA 16866  
 (814) 342-3709  
 James E. Ricotta  
 Watchmaker \* Jeweler \* Goldsmith

*New!*  
**Ricotta**  
 Our  
 "Signature Series"  
**Watch Collection**  
 High Grade Swiss  
 Quartz Assembled  
 in the USA

**GEOTECH**  
**ENGINEERING, INC.**  
 Engineers, Geologists & Surveyors  
 4031 Allport Cutoff, Morrisdale, PA 16858

Joel L. Albert, P.E. Phone: (814) 342-7090  
 President Fax: (814) 342-7099  
 e-mail: jalbert@geotech-engineering.com

**SKELLY AND LOY, INC.**  
 offering professional  
 engineering & environmental services

**SKELLY AND LOY**  
 CHEMISTRY - ENVIRONMENTAL  
 CONSULTANTS

Mining, Civil, & Environmental Engineering  
 Wetland Identification & Delineation, Permitting  
 Threatened & Endangered Species Studies  
 NPDES Permitting  
 Erosion & Sedimentation Control  
 NEPA Permitting  
 Hydrogeological Investigations & Groundwater Development  
 Stream Restoration  
 Noise & Air Quality Management  
 Historical & Archaeological Resource Studies  
 On-Lot & Package Water/Wastewater Systems  
 Environmental Site Assessment/Characterization  
 GIS & Digital Technology

Contact: Marvin H. Klinger  
 SKELLY AND LOY, INC.  
 303 South High Street, Port Matilda, PA 16870  
 800-892-6532 or 814-692-8682  
 mklinger@skellyloy.com www.skellyloy.com

 School Transportation • Charter Service  
 State Inspections • Towing • Repairs  
 Commercial Drivers License Skills Testing



**LONG MOTOR BUSES**  
 721 Troy-Hawk Run Hwy.  
 Philipsburg, PA 16866

Phone: (814) 342-0195  
 Toll Free: 1-800-340-5664  
 Fax: (814) 342-3473

TED LONG

**BILLBOARD ADVERTISING**  
 Covering the Moshannon Valley Area

**SAUPP SIGNS**

Quality Signs & Graphics of All Kinds  
 Banners - Magnetics - Truck Graphics - Large Outdoor Prints

**814-342-2100**  
 www.ssbillboard.com

**MOSHANNON VALLEY PHARMACY, INC.**

**PROUDLY SERVING YOU WITH 3 LOCATIONS**

208 Medical Center Drive.....342-5200  
 1071 North Front Street.....342-3750  
 Philipsburg, PA 16866

402 East Sycamore Road  
 Snow Shoe, PA 16874.....387-4014

**FREE DELIVERY** service available at both Philipsburg locations



**Chamber Choice**  
 The People. The Power. The Plan for You.

**AMERICAN HOME PATIENT™**

When you need a respiratory provider you have a choice

- Home Oxygen Therapy
- CPAP & Supplies
- Enteral
- Aerosolized Medications

"Our patients report 98% patient satisfaction with our service and delivery"

200 Shady Lane  
 Philipsburg, PA 16866  
 P: 814.342.6710 | F: 814.342.4412

2437 Commercial Blvd. Ste 4  
 State College, PA 16801  
 P: 814.234.9771 | F: 814.234.9610



www.ahom.com

## Thank You!

The Moshannon Valley Economic Development Partnership thanks you for your support of our economic & community development efforts!

### Renewals 1st Quarter

American Cancer Society  
 American Homepatient  
 Bloom Electric  
 Centre County Community Foundation  
 Chamber of Business & Industry Center Co.  
 ChemStation-Happy Valley  
 Clearfield Chamber of Commerce  
 Clearfield Hospital  
 Converse Consultants  
 Custom Castings Northeast  
 David Reid Inc.  
 Denise Franko-Bacher  
 Diamondback Automotive Accessories  
 Donald Branstetter  
 Drayer Physical Therapy  
 Forcey Coal  
 Furniture 4 Less  
 Geo Tech Engineering Inc.  
 Hawbaker Engineering  
 Hi-Way Pizza  
 Hurwitz Brothers  
 Joseph Graham Masonry  
 King Coal Sales, Inc.  
 Leadership Centre County  
 Lezzer Lumber  
 Lynn Herman  
 Morris Township  
 Moshannon Valley Super Bowl  
 Osher Lifelong Learning Institute at Penn State  
 Philipsburg Borough  
 PMG Pennsylvania Corp.  
 PNC Bank  
 Reeds Custom Awards & Framing  
 Skelly & Loy, Inc.  
 The Drucker Company  
 The EADS Group

The Well  
 Thomas M. Irwin, DMD  
 Tyrone Hospital  
 Your Building Center

## MESSAGE

Continued from Page 1

Our luncheon details, again:

12:00 noon  
 Friday, April 19th  
 Cen-Clear Child Services  
 Rt. 322, just west of Philipsburg  
 Complimentary buffet lunch

We are hoping for a great turnout and we are looking forward to recognizing the businesses of our region.

We would like to commend Kerry Webster and the staff of the Philipsburg Journal for the excellent business and economic development supplement that appeared in the February 22<sup>nd</sup> edition of the Journal. It was great to see area businesses recognized for the many years that they have operated here in the greater Philipsburg/ Moshannon Valley region. We plan to include the business supplement with the other marketing materials that we provide to prospects considering our area for their businesses.

We continue to work with our state elected officials and C. Alan Walker, Secretary of the Pennsylvania Department of Community & Economic Development to convince state government that the former Philipsburg Area Hospital property should be cleared for future development. Two large state bureaucracies are directly involved with the property: PA Department of General Services and the PA Department of Public Welfare. Although there are many times when it seems like we are "banging our heads against the wall" so to speak, we will not give up on this effort to create another site for new development.

We continue to explore the future options for the

Continued on Page 7

## Support Area Organizations that are Involved in Fundraising

A number of important Moshannon Valley organizations are currently working to raise funds from the community to support their work. The Moshannon Valley YMCA, Holt Memorial Library and the Clear-Centre Pool Association are three non-profit organizations that need the support of the residents of this area. The MVEDP supports these organizations and many others in the area. Donations were just approved to the three organizations named above.

Regarding the Clear-Centre Pool Association, they are working hard to raise the money needed to make critical repairs at the pool located in the Osceola Mills area. It would be very disappointing if the region lost this important asset that especially benefits our children. The MVEDP will provide whatever assistance might be needed by the Association.

## ATA

Continued from Page 1

Fullington, and will provide two trips into State College each morning originating in Hyde at 5:24 a.m. and 6:24 a.m. Stops along the route include the Clearfield County Courthouse; Irwin Drive in Decatur Village; and the Gas Light Café, the Philips Hotel, 8th Avenue & Presqueisle Street and the Cold Stream Dam in Philipsburg. In the Centre Region the buses will discharge passengers at the Bryce Jordan Center and Pattee Transit Center on the Penn State Campus.

Return trips will depart from the Bryce Jordan Center (Stadium West bus stop) at 4:15 p.m. and 5:15 p.m. and from the Pattee Transit Center (Westbound bus stop on the Chambers Building side) at 4:22 p.m. and 5:22 p.m.

Registered riders will be eligible to participate in CATA's Guaranteed Ride Home program, which provides up to four rides

home annually in the case of emergency. (Program restrictions apply.)

"Census data shows that nearly 4,800 Clearfield residents travel into Centre County each day, and the majority of those trips are at prime commuting times," notes Hugh Mose, CATA General Manager. "We're delighted to see this service take effect on January 2, as a complement to CATA's existing CATACOMMUTE program, and expect that it will provide a new, convenient, inexpensive transportation alternative to those traveling into the area each day."

A brochure outlining the Clearfield-Centre Connector service, a map of the route, a schedule and information on fares can be found by visiting the ATA website at [www.rideata.com](http://www.rideata.com). Prospective riders can obtain additional information by contacting the ATA Customer Service at (886) 282-4968.

## Fingerlakes

Continued from Page 1

The company has expanded their customer base to include coal, natural gas, restaurant and janitorial businesses. The current plan is for the company to add new employees over the next year.

On a related note, Organic Climbing LLC, a business tenant of the Regional Business Center, has expanded their operations within the Center. Josh Helke, Owner, continues to grow the business and that growth has required him to add more building space and employees. The MVEDP is pleased to be working with him on managing the business's growth.

## MESSAGE

Continued from page 6

P-O Junior High Building that will be vacated by the school district later this year. I believe that the school district needs to support the community's efforts to evaluate the reuse potential of that building. We need the school's architect to help us to know both the projected operating costs, and the renovation costs. It is next to impossible to proceed without good cost estimates.

Meetings are being organized with school and community officials to discuss the future of the 6th Street property. The community and the school district (who represents our community) must work together if there is to be any hope of reusing that building.

# SAVE THE DATE!

## Moshannon Valley Economic Development Partnership's Annual Awards Celebration To include Annual Awards Presentation with Guest Speaker

Date: April 19, 2013  
Place: Cen-Clear Child Services  
Time: 12:00 Noon  
Cost: Complimentary to our members

### For More Information or to RSVP:

Email: Sharon Yingling at [sharonf@mvedp.org](mailto:sharonf@mvedp.org)  
Phone: 814-342-2260  
Mail: MVEDP  
200 Shady Lane  
Philipsburg, PA 16866

## MVEDP to Host Business after Hours

The MVEDP will host a Business after Hours event in April. The details:

5:30-7:00 p.m.  
Thursday, April 25th  
Moshannon Valley Enterprise Center  
Food to be provided by Country Catering

A key reason for the MVEDP to hold the BAH at the Enterprise Center is to provide our members and supporters with an opportunity to learn more about the building space that is currently available at the Center.



MOSHANNON VALLEY ECONOMIC  
DEVELOPMENT PARTNERSHIP  
200 SHADY LANE  
PHILIPSBURG, PA 16866