

MOSHANNON VALLEY PROGRESS

Special points of interest:

- Thank You!
- In The Spot Light!
- WWW.MVEDP.ORG
- PA Site Search
- Historical Foundation Museum Open House

Inside this issue:

Marcellus Shale	1
Philipsburg Farmer's Market	1
Energy Deregulation	1
MVEDP Golf Outing	1
Lumber Heritage	3
Housing Rehab Grant	6
South Hills Expansion	6
BREP	8

MARCELLUS SHALE



The MVEDP is watching Harrisburg closely to see what results from Governor Rendell's

proposal to enact a severance tax on natural gas extraction. The Governor made the announcement as he signed Senate Bill 1042, the state's fiscal code. The bill

Continued on Page 2

What You Need to Know Energy Deregulation

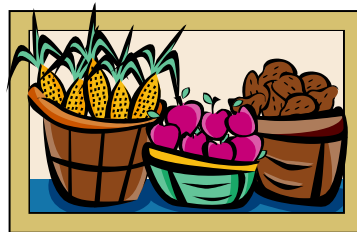
The MVEDP recently hosted a seminar on energy deregulation. John Shimko, Manager for First Energy of Clearfield explained deregulation and discussed what businesses should be doing now and in the future to prevent significant energy cost increases.

First, when the "caps" are removed in January businesses will be able to shop for their energy



Continued on Page 6

Philipsburg Farmers' Market



The Philipsburg Main Street Program and Philipsburg Bor-

ough are have partnered to open the Philipsburg Farmers' Market. The market takes place every Friday from 5:00 pm to 7:00 pm and Saturdays from 10:00 am to 4:00 pm through September and is located in Municipal Parking Lot #1 located at 112 East Presqueisle Street, between Front and Second Streets in Historic Downtown Philipsburg.

Locally grown produce, plants, and flowers are be available in season as well as locally made baked goods, jams, jellies, and more. According to chairperson and

Continued on Page 3

MVEDP Annual Golf Outing 2010

The MVEDP held its 21st Annual Golf Outing and Picnic on Tuesday, June 22, 2010. The event was co-sponsored by Hughes Engineering and Pennoni and Associates.

18 teams competed in three flights. First Flight winners were Mike McKinney, Mike O'Niell, Allen Pryde and Fred Farber. Second Flight winners were Mike LaFuria, Ryan Doyle, Emily Gette-Doyle, and Richard Snyder. Third Flight winners were Bryan Bennett, Thad Johnson, Greg Start and Jeff Vaughn. Two on course prizes were awarded for "closest to the pin", those prizes went to Arch Myers and Mike O'Niell. One on course prize

Continued on Page 2

Top Sponsors!



Hole Sponsors!

Pennoni Associates, Inc.
 Hughes Engineering
 Walter Hopkins
 Charles Jones Insurance Agency
 Christoff Mitchell Petroleum
 Clearfield Bank & Trust
 CNB Bank
 Stone Valley Construction
 Keller Engineers

Olenicks Printing & Photography
 Karen Blair & Robert Brand
 South Hills School of Business & Technology
 Fried Diehl's of Philipsburg
 Geo Tech Engineering
 AmeriServ Financial Bank
 Bocks Dining & Tea Room
 Keller Tire & Auto

1st Flight Winners



Left to right: Fred Farber, Mike McKinney, Allen Pryde, Mike O'Niell

3rd Flight Winners



Left to right: Greg Stark, Bryan Bennett, Jeff Vaughn, Thad Johnson

2nd Flight Winners



Left to right: Richard Snyder, Mike LaFuria, Ryan Doyle, Emily Gette-Doyle

Prize Sponsors!

Keller Engineers
 Geo Tech Engineering
 Clearfield Hospital
 Moshannon Valley Economic Development Partnership
 Charles Navasky & Company
 Central Steamer Carpet & Upholstery Cleaning
 Paul C. Fischer Pro Shop

Golf Continued from Page 1

was awarded for "closest to the Line", that prize went to Craig Coon. This is the second year the MVEDP has solicited sponsors for the event and it was very successful! Thank you to our prime sponsors, Pennoni & Associates and Hughes Engineering. In addition, we would like to thank those who sponsored holes: Pennoni Associates, Inc., Hughes Engineering, Walter Hopkins & Company, Charles Jones Insurance Agency, Christoff Mitchell Petroleum, Clearfield Bank 7 Trust, CNB Bank, Stone Valley Construction, Keller Engineers, Olenick's Printing & Photography, Karen Blair & Robert Brand, South Hills Schools of Business & Technology, Fried Diehl's of Philipsburg, Geo Tech Engineering, AmeriServ Financial Bank, Bock's Dining & Tea Room, and Keller Tire & Auto. We would also like to thank the following businesses for donating door prizes: Keller Engineers, Geo Tech Engineering, Clearfield Hospital, Moshannon Valley Economic Development Partnership, Charles Navasky & Company, Central Steamer Carpet & Upholstery Cleaning, and Paul C. Fischer Pro Shop and Dr. William Harkins. Thank you to everyone who participated. See you next year!



LUMBER HERITAGE REGION HOLDS RAFFLE FOR SPECIAL EDITION RIFLE



The Lumber Heritage Region of Pennsylvania is one of the 12 Heritage Areas in Pennsylvania.

Its mission is to preserve, relate,

and enhance the history and heritage of the people and their relationship with the Pennsylvania Forests. Centre County is member of the Lumber Heritage Region because of its rich lumber history and promotion of sustainable forestry today!

As a way of commemorating the lumber history of the Pennsylvania, the Lumber Heritage Region commissioned the Rocky Mountain Firearms to create a commemorative rifle.

This family heirloom is a tribute to the history of the Lumber Industry in Pennsylvania. The Lumber Heritage Special Edition Henry .45 LC is for those collectors who cherish both history and beautiful art. The rifle is fully plated in 24-carat gold with artwork highlighted in

jewelry-grade nickel, a beautiful canvas for this work of art. The retail value of the Special Edition rifle is \$3,495!

Only 30 of these rifles have been made and the Lumber Heritage Region is holding a raffle for one of the rifles. Raffle tickets are \$10.00 each and there will only be 1,000 tickets sold! Drawing for the rifle will take place on September 4, 2010!

Raffle tickets can be purchased online through the Lumber Heritage Region website at www.lumberheritage.org. By calling Lumber Heritage Region at 814-486-0213. Or by contacting your local Lumber Heritage Representative, Emily Gette-Doyle 814-342-2260 or email Emily@mvedp.org. Get your tickets today!



Marcellus CONTUNIED FROM PAGE 1

allows for transfers into the General Fund to balance the state's fiscal year 2010-11 budget. The bill also contains language that affirms the commonwealth's intent to enact a severance tax by October 1st. According to the Governor, the rich natural gas deposits in the Marcellus Shale represent a tremendous opportunity in the form of new jobs and economic stimulus to mostly rural communities across the common-

wealth. For more information on the fiscal year 2010-11 budget, visit www.pa.gov. For more information about natural gas drilling in Pennsylvania, visit www.depweb.state.pa.us.

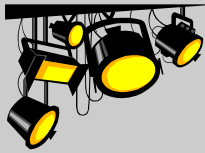


MARKET CONTINUED PAGE 1

Philipsburg Borough Manager, Jan McDonald, additional vendors will be added as the season progresses.

The market has been operating since 2004 and for the first time has partnered with the Philipsburg Borough to host the event. There is a \$5.00 weekly vendor fee to participate and vendors should be aware that if you are selling prepared foods, you must have liability insurance and the appropriate licenses as required by federal, state, county, and/or local government. Tables and/or tents can be provided on a first come first served basis.

Anyone interested in becoming a vendor or in obtaining more information should contact Philipsburg Borough at 814-342-3440 or the Main Street Program at 814-342-2260 or visit www.PhilipsburgPA.org.



TAKE ADVANTAGE OF OUR **ABSOLUTLY FREE** ADVERTISING FOR ALL CHAMBER MEMBERS! PUT YOUR COMPANY "IN THE SPOT LIGHT".

Wimer Builders

We Do it All from Ground to Rooftop
577-7263 Clearfield, PA 765-3038



Robert Swansegar Jr.
 Associate
 An Independent Associate Representing Aflac

117 Merryman Lane
 Philipsburg, PA 16866 9354
 814.577.1068 phone
 814.343.2528 fax
 robert_swansegarjr@us.aflac.com
 aflac.com



OLLI

"A Health Club for the Mind"

Join us at OLLI, the Osher Lifelong Learning Institute, a nonprofit organization that provides affordable, educational and social activities for adults 50 and better!

Summer Philipsburg/Moshannon Valley Courses:

- Magic with Cards and More!
- Beginning Bridge
- Historical Tour & Lunch at Rowland Mansion
- The Wonderful World of Tea
- Pontoon & Picnic
- A Little Taste of Russia
- Over 40 courses in Bellefonte, Penns Valley & State College

Summer term begins June 28, 2010

Call 814-238-2368 for a FREE catalog

www.ollip.su.edu




REED'S

CUSTOM AWARDS AND FRAMING

1006 ALTON ST.
 PHILIPSBURG, PA 16866

www.reedscustomawardsandframing.com

Trophies + Plaques + Ribbons + Medals
 Dash Plates + Picture Framing

814.360.2981

The AARP Auto Insurance Program from The Hartford
Now available through your local Hartford independent agent!



Call for your free, no-obligation quote.

Find out more about benefits like **Accident Forgiveness[†]**, a **Disappearing Deductible[†]**, **Lifetime Renewability[†]**, and our **Competitive Rates!**

This auto insurance is designed exclusively for AARP members – and is now available through your local agent!

Call Today: 765-5573 or 800-326-9635

HELBOLD & STEWART GROUP
 Auto & Home Insurance Agent

SERVING PENNSYLVANIA'S MUNICIPALITIES FOR OVER 41 YEARS



- Infrastructure Management
- GIS and Web-based Services
- Water Resources Management
- Wastewater Management
- Brownfield Development
- Economic Development Planning
- Historic Resources Studies
- Mining, Civil, & Environmental Engineering
- Noise & Air Quality Studies
- Land Use & Transportation Planning

HARRISBURG—PITTSBURGH—STATE COLLEGE

800-892-8532 800-340-7538 814-692-8882

www.skellyloy.com

MOSHANNON VALLEY REGIONAL BUSINESS CENTER



- Low Cost Commercial/Industrial Space Available
- A Tax-Free Keystone Opportunity Zone
- Located on PA Route 322 one mile east of Philipsburg
- 10 Miles to I-99 and to I-80
- 8,000/SF Currently Available

Contact: Stan LaFuria, Exec. Dir.
814-342-2260
Email: slafuria@mvedp.org

MOSHANNON VALLEY ENTERPRISE CENTER



- Space to accommodate manufacturing, distribution, warehousing or other uses
- Air conditioned offices and conference room available; 50% of large area also has air conditioning
- One-quarter mile from PA Rt. 322, one mile east of Philipsburg
- 10 miles to I-99 and to I-80

Contact: Stan LaFuria, Exec. Dir.
814-342-2260
Email: slafuria@mvedp.org

UPCOMING BUSINESS AFTER HOURS

Wednesday, July 28, 2010

Westminster Place at
 Windy Hill Village
 5:30-7:30pm.

Emily Gette-Doyle, Program Manager
 Moshannon Valley Economic
 Development Partnership, Inc.
 200 Shady Lane
 Philipsburg, PA 16866
 814-342-2260, www.mvedp.org
 emily@mvedp.org



MOSHANNON VALLEY REGIONAL BUSINESS PARK LOTS AVAILABLE!



- Tax Free Keystone Opportunity Zone
- 6 Lots Still Available
- Located Along PA Route 322 One Mile East of Philipsburg
- Complete With All Utilities

Contact: Stan LaFuria, Exec. Dir.
814-342-2260

Advertising Opportunity

Reserve your space in the **“Moshannon Valley Progress.”** Take advantage of absolutely **free** advertising for your business. Contact the Partnership for details. Contact Sharon Yingling at 814-342-2260 or send an email to sharonf@mvedp.org. Advertising is free to Partnership members only. Limited space available so call today.

Energy Continued from page 1



suppliers. Anyone who does not switch will be charged a set fee by Penelec. Benefits to switching providers include avoiding charges by purchasing the correct product, contracting with

the correct supplier, and negotiating the correct contract language. There are companies that can help you shop. The downside to switching is that you may get separate bills from your generator versus your transmitter. Also, utility prices change over time. It is possible that you may pay more than the utility rate for a short period of time. Penelec does not know today what the rates will be in January.

There are also grant funds available to businesses who upgrade fixtures and equipment. FirstEnergy has launched a variety of incentive and assistance programs designed to encourage commercial and industrial customers of Met-Ed, Penelec, and Penn-Power to install high-efficiency equipment. These programs are designed to offset a portion of the incremental cost associated with high-efficiency equipment. Incentives will be provided to customers who install qualifying equipment, helping to meet the goals established by Act 129 of 2008. Incentives are available for qualifying equipment installed on or after October 28, 2009. FirstEnergy's programs for businesses, government, and non-profit customers include: two lighting programs that provide incentive for installing high-efficiency lighting fixtures and controls, a program to promote the purchase of efficient motors and variable speed drives, an HVAC program to encourage non-residential customers to install high efficiency heating and air conditioning systems, and audit and technical assessment programs to identify opportunities to increase energy efficiency throughout a facility or building. In some cases 100% of the cost is reimbursed. Don't wait! Visit www.energysavepa.com for an application and additional information.

Housing Rehab Grant



Left to right: Ray Buynak, Senator John Wozniak's Office, Andy Rebar, Decatur Twp. Supervisor, State Rep., Camille George, Sherrie Beals, Housing Rehab Admin., and Stan LaFuria Exec. Dir. MVEDP

The Decatur Township Supervisors, State Senator John Wozniak and State Representative Camille George announced that Decatur Township was recently approved for a \$500,000.00 grant through the Pennsylvania Department of Community & Economic Development. Funds are provided through the Department's 2008 HOME Program and will be used for single-family, owner-occupied housing rehabilitation in six eastern Clearfield County communities: the townships of Decatur, Cooper, Morris, and the boroughs of Chester Hill, Osceola Mills, and Wallaceton.

The Partnership's goal for the program is to ensure that when the rehabilitation is completed, the property meets an acceptable standard and will in safe, sanitary and decent condition for a reasonable period of time. Conditional grants for eligible applicants are available of up to \$18,750.00.

The program's requirements include being a single unit owner-occupied home, permanently affixed to applicant's land, residing in one of the six eastern-Clearfield County municipalities listed above. Income eligible applicants are those that fall within the most current Section 8 HUD income guidelines.

For more information on the program please contact Sherrie Beals, Housing Rehabilitation Administrator, at 814-342-2260.

SOUTH HILLS SCHOOL EXPANSION

The South Hills School of Business and Technology, Philipsburg campus recently expanded their facilities in order to accommodate record enrollment numbers for Fall 2010. The staff at the MVEDP did the construction work and the rooms will be ready for the start of fall classes. For more information visit their website www.southhills.edu.

Thank You!

The Moshannon Valley Economic Development Partnership and the Philipsburg Revitalization Corporation **Thank You** for your support of our economic and community development efforts!.

Renewals/New Members 1st & 2nd Quarter 2010

611 MRI-CRT
Adler's Market
AFLAC
American Roofing, Inc.
AmeriServ Financial Bank
Automax Service Center, Inc.
Belding & Mull, Inc.
Boggs Township
BPOE #1173
Bryan & Melody Crist
C. Classic Dodge Chrysler Jeep
Central PA Community Action, Inc.
Centre County Community Foundation
Centre County United Way
Charles Jones Insurance Agency
Charles Navasky & Company
Christoff Mitchell Petroleum
Clearfield County EDC
Clearfield Hospital
Clearfield Hospital Surgical Clinic
Clearfield Wholesale Paper
Converse Consultants
Country Catering
Cutting Edge Machining Solutions
David Reid, Inc.
Decatur Village
Diann Westrick, MD
Dixon Computer Services
Douglas Explosives, Inc.
Dr. William Harkins
Dunlap's Auto Sales
Evelyn Kepler
Forcey Coal, Inc.
Fred Deihl's of Philipsburg
Friends of Library
Front Street Jewelers
Gary & Laura Barnett
GB Accounting Services
Geo Tech Engineering, Inc.
Glendale Industrial Development Association

Grauch Enterprises, Inc.
Harpster of Philipsburg
Hawbaker Construction Services
Hi-Way Pizza
Houtzdale Heating & Air
Hughes Engineering
Hurwitz Brothers
Jackie Mostyn's hair Salon
Jean Fooks
John & Eva Sterno
Joseph Graham Masonry
Joyce Luzier
Karen Blair & Robert Brand
Kephart Hardware Company
Larry's Saw Shop
LDGS/Laird Design & Graphic Services
Leadership Centre County
Lezzer Lumber Company
Lock Haven University of PA Clearfield Campus
Long Motor Buses, Inc.
Lynn Herman
M&T Bank
Manpower Inc. of Altoona
MBE
McDonalds of Philipsburg
Midway Collision
Mike Baron
Morris Township
Moshannon Valley Pharmacy
Moshannon Valley YMCA
Moshannon Valley EMS

National Furniture Assoc. Inc.
Olenick's Printing & Photography
Osher Lifelong Learning Institute
Philipsburg Beverage, Inc.
Philipsburg Borough
Philipsburg Historical Foundation
Philipsburg Journal
Philipsburg Kiwanis Club
Philipsburg Marble & Granite
PMG Pennsylvania Corp.
Samuel J. Lansberry, Inc.
Sherwin Williams
Simler Insurance Agency
South Hills School of Business & Technology
Stark Contracting, LLC
TE Matia Enterprises
The Drucker Company
The EADS Group
The Philips Hotel, LLC
The Philipsburg Journal
The Progress
The Rowland Theatre
Thomas M. Irwin, DMD
Tom Scott
UGI-Central Penn Gas, Inc.
Walker Financial Services
Walker Hopkins & Company
Wardo Financial Services
Wane Township Landfill
Wimer Carpentry-Masonry
Windy Hill Village

HISTORICAL FOUNDATION MUSEUM OPEN HOUSE

The Philipsburg Historical Foundation Museum is now open for tours each Sunday from 2:00-4:00 pm the museum located at 203 North Front Street. The Simler House and the Union "Old Mud" church are also open for free tours every Sunday from 2:00-4:00 pm through Labor Day weekend.



Moshannon Valley Economic
Development Partnership
200 Shady Lane
Philipsburg, PA 16866

814-342-2260
814-342-2878 fax
movalley@netphd.net

WE'RE ON THE WEB
WWW.MVEDP.ORG

PA SITE SEARCH

Looking for business property in the Moshannon Valley? PA Site-Search makes relocating or expanding a business in Pennsylvania easy. The MVEDP has our properties online! Visit www.pasitesearch.com

Preservation Plan Survey

The PRC, Philipsburg Borough, and Centre County Planning are preparing a borough Preservation Plan. As part of the planning process we are seeking public input. We invite you to take our survey. Download the PDF or fill out the word version from our website www.philipsburgpa.org or email mainst@philipsburgpa.org and we will send you a copy.

“BREP” Business Retention & Expansion Program

The MVEDP in partnership with the SEDA-COG and the North Central Pennsylvania Regional Planning & Development Commission has conducted a number of Business Retention and Expansion Program (BREP) interviews during the past couple months. The program, funded by the Commonwealth of Pennsylvania, requires economic development professionals to survey and assess the needs of existing businesses in the region. BREP is one of the nation's most aggressive job retention programs. It was established in 1997 to forge better working relationships and stronger collaboration among various public, private, state and local economic development organizations, with the goal of enhancing the efficiency and effectiveness of efforts to retain and grow existing Pennsylvania businesses. Since its inception, representatives involved in BREP have completed over 73,400 visits to Pennsylvania businesses. The Partnership conducted 24 interviews this year with local businesses. The Partnership expresses its sincere thanks to all those companies who participated in the program this year.

**MOSHANNON VALLEY ECONOMIC
DEVELOPMENT PARTNERSHIP
200 SHADY LANE
PHILIPSBURG, PA 16866**