



## Welcome G-O-Metric, Inc., Teel Manufacturing, LLC to the Philipsburg Area!



The MVEDP is pleased to welcome G-O-Metric, Inc., Teel Manufacturing, LLC to the Philipsburg/Moshannon Valley region. Aaron Teel, a western Pennsylvania native and his wife Jill, who have lived in Centre County for over 20 years purchased G-O-Metric, Inc. The company was located in New Jersey and Aaron moved it to the former RP Supply building on Second Street. The Partnership is very pleased to have this manufacturing company located here in our region.

Continued on Page 2

### Inside this issue:

Welcome G-O-Metric, Inc., Teel Manufacturing, LLC.	1
MVEDP Board of Directors Election in October	1
KOZ Expiration Date Extended by Taxing Authorities	1
Centre Co. Commissioner Higgins Presents Economic Assessment	2
New Enterprise Center Sign Completed	3
Lots Available in the Moshannon Valley Regional Business Park	3
State Loan Program with 2% Interest Rate Still Available.	3
Welcome New Member	6
Thank You Membership	6
Space Available at the Enterprise Center	7
Philipsburg/Moshannon Valley Manufacturers Recognized	7
Sites Available at the Moshannon Valley Regional Business Park	8

### MVEDP Board of Directors Election in October

The Partnership is conducting its annual board of directors election and ballots will soon be mailed to our members. There are five board seats up for reelection and the board members who hold those seats all want to run for reelection: Bryan Bennett, Laura Holden, Steve Lyncha, Dustin Minarchick, and Robert Steward Jr. The additional candidate that will be on the ballot is former MVEDP board member Gene Wardo. The results of the election will be reviewed by the board at their November meeting and the winning candidates will take their seats beginning in December. Members are asked to please complete the ballot and return it to the MVEDP office. Thank you.

### Keystone Opportunity Zone Expiration Date Extended by Taxing Authorities

Philipsburg Osceola Area School District, Rush Township and Centre County government have approved an extension to the expiration date of the Keystone Opportunity Zone (KOZ) designation at the Regional Business Park. The KOZ tax benefits will remain in place for only the unsold lots in the Business Park (Lots #3, #5, #6, and #11) and for seven additional years, through December 31, 2024. With the KOZ designation for those unsold lots set to expire in December, it was necessary for the staff to work with the three

Continued on Page 2

### Special points of interest:

- Free Advertising In The Spotlight
- Membership Renewals

## Centre County Commissioner Higgins Presents Economic Assessment



From Left to Right: Mark Higgins, Centre Co. Commissioner, Steve Lynch, MVEDP 1st Vice President

Centre County Commissioner Mark Higgins attended the September 19<sup>th</sup> meeting of the MVEDP’s board of directors and presented the “Centre County Economic Assessment.” Initiated in late 2016, this work is an analysis of the Centre County economy. The Penn State Department of Agricultural Economics and their Extension Department were hired by the county to gather economic data and information necessary to compile an economic development strategy for the county. Commissioners Higgins, Steve Dershem and Michael Pipe are to be commended for their interest in growing the county’s economy.

## G-O-Metric, Inc.

Continued from Page 1

G-O-Metric, Inc. is the world’s premier manufacturer of RFI/EMI Honeycomb Ventilation Panels. The company has been making these panels for over 40 years and the product serves government, military, medical, and a wide variety of electronics service industries. The company hired eight full-time employees from the Philipsburg area.

It is terrific to add G-O-Metric, Inc. to the solid list of manufacturers that are present within the Philipsburg/Moshannon Valley region. Welcome Aaron and G-O-Metric, Inc.!

## KOZ

Continued from Page 1

taxing bodies to secure an extension. State law allows KOZs to be extended.

It is very important to point out that through the KOZ program, the P-O School District, Rush Township, and Centre County government are the MVEDP’s partners in economic development. This partnership dates back to 1998 when the KOZ program was first put in place by state government. At that time, the MVEDP purchased the land that is now the Business Park. It was a former coal mining site with both a deep mine and surface mine located there. The site was generating \$1400 in annual real estate taxes to the school district and county government. Today, the businesses located in the Business Park pay over \$144,000 in annual real estate taxes and employ over 300 people.

## MVEDP Has Low-Cost \$\$ to Lend



The MVEDP’s Revolving Loan Fund program has been available to local businesses since 1988. The matching loan funding can be used for working capital, machinery and equipment or land and buildings. The interest rate is as low as 3%! One of the most outstanding features of the loan program is the quick turnaround time. Once a reviewable application is received, the loan committee will meet and if the loan is approved, the money provided to the borrower in less than 30 days. Contact the MVEDP at 342-2260 if you have a business seeking loan financing.

# New Enterprise Center Sign Completed

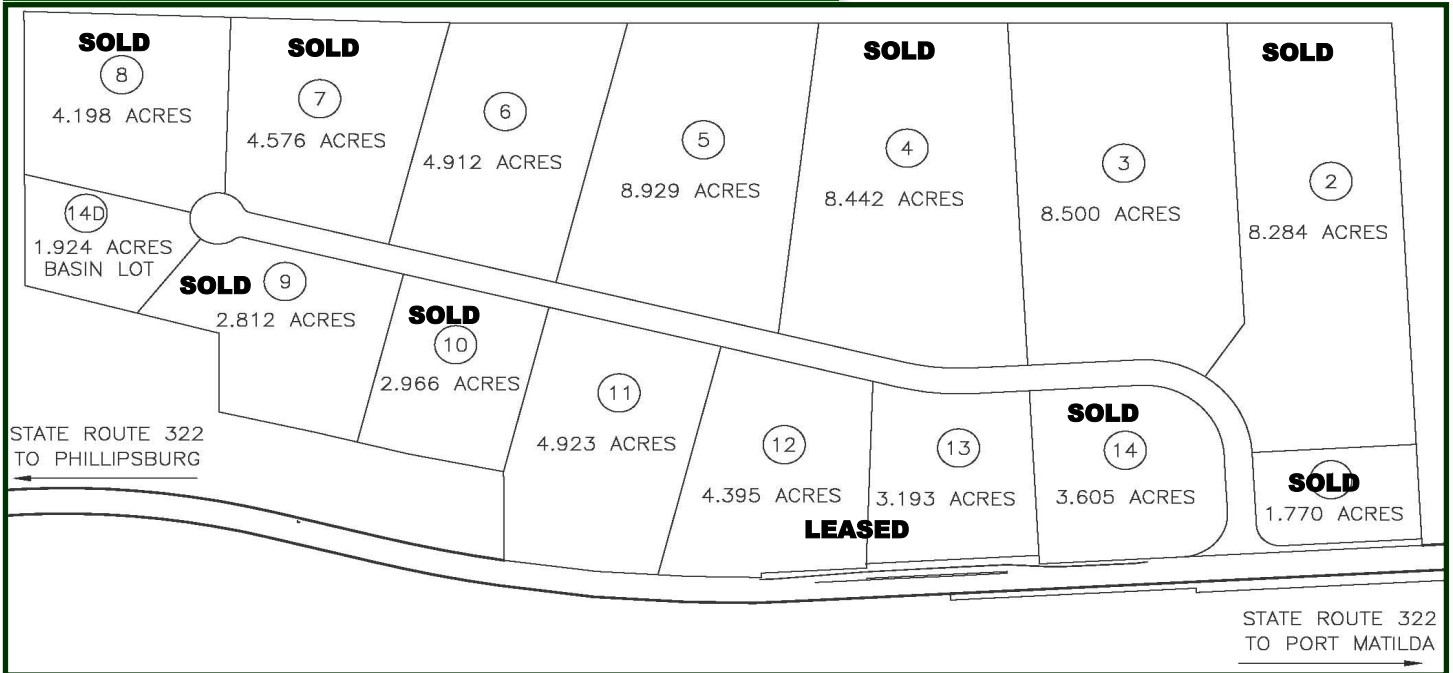


A new Moshannon Valley Enterprise Center sign has been completed. The sign is located at the corner of Lochlomond Road and Shady Lane Drive. Icy roads this past winter caused a driver to knock the old sign over. That sign had been in place for over 27 years. Larry Potter, a life-long concrete professional, did a terrific job on the new sign and saved the MVEDP \$450 in costs.

# State Loan Program With 2% Interest Rate Still Available

Earlier this year, the Pennsylvania Industrial Development Authority (PIDA) lowered the interest rate on its business loan program to an unheard of rate of 2%. This 2% interest rate will continue through the end of the year. The Partnership is a Certified Economic Development organization and is able to put PIDA loans together for area businesses. Staff just recently put a PIDA loan application together for Organic Climbing, LLC, a company located within the Regional Business Center that is planning to build a new manufacturing facility within the Business Park. Applications must be completed and submitted to the state PIDA office by November 1<sup>st</sup> in order to be reviewed at their December 6<sup>th</sup> board meeting. All types of businesses are eligible for PIDA loan funding and the money can be used for land and building projects, working capital and machinery and equipment. Contact the Partnership at 342-2260 if you would like to pursue this low interest loan financing.

# Lots Available in the Moshannon Valley Regional Business Park





# IN THE SPOTLIGHT



**WELDING & MULL**  
PHILIPSBURG, PA  
THE OUTDOORSMAN'S HAVEN

**NEW STORE HOURS**  
M-TH 9:00-6:00  
FRI-SAT 9:00-9:00  
814 342-1800



**CRAFTED IN PHILIPSBURG, PA.**  
Employing local aluminum welders, fabricators, & general labor.  
280 Shadylane Drive  
1 (800) 935-4002  
WWW.DIAMONDBACKCOVERS.COM



**BUILT TOUGH  
BUILT HERE.**



**Central Insurers Group**  
Charles A. Jones Agency



*75 Years of Excellence  
Competitive Rates for You*

Phone (814) 342-1880  
[www.centralinsgrp.com](http://www.centralinsgrp.com)  
20 S. Front St., Philipsburg, PA 16866  
wjones@centralinsgrp.com

*Hrenko*  
**Hrenko Insurance**  
Agency Incorporated

*Serving the Moshannon Valley for over 31 years*  
**Auto - Home - Business - Life**

[www.hrenko.com](http://www.hrenko.com)  
(800) 696-8097  
962 Tyrone Pike - Philipsburg

*Blaise*  
**Alexander**  
CHEVROLET - BUICK

113 WALTON STREET, PHILIPSBURG, PA 16866  
800-462-1519 OR 814-342-3223

<b>SALES HOURS</b>	<b>PARTS HOURS</b>
MON., TUES., THURS., FRI.	MONDAY-FRIDAY
9:00 – 8:00	8:00-5:00
WEDNESDAY & SATURDAY	CLOSED SATURDAY
9:00 – 5:00	

[WWW.ALEXANDERPHILIPSBURG.COM](http://WWW.ALEXANDERPHILIPSBURG.COM)  
TAKING DEALS THE OTHER GUY'S WON'T!!  
GUARANTEED!!

**\*\*SPECIAL INSURANCE OFFER\*\***


Charles A. Jones Insurance Agency presents the  
**Chamber Choice Dividend Insurance Program**  
offered by Penn National Insurance.

**PROGRAM BENEFITS**

- Earn an annual dividend—11 % dividend declared the 2nd year to eligible policy holders
- Must be a member of the MVEDP
- Must have business insurance with Penn National

Want to know more? Contact Charles A. Jones Insurance Agency at [814-342-1880](tel:814-342-1880) or visit [PennNationalInsurance.com](http://PennNationalInsurance.com)

*See us for your next project...*



**Lezzer Lumber**  
BUILDING MATERIALS CENTERS

311 Schofield Street, Curwensville **236-0220**  
2350 E. College Ave., State College **237-3511**

Looking for Building Materials at Discount Prices...  
Overstocked, Discontinued, Returns  
See our new outlet site at  
[www.lezzerbargainoutlet.com](http://www.lezzerbargainoutlet.com)



Now I understand  
**Investment Management**  
after meeting with Vicki.



Call Vicki Myers at CBT Financial & Trust Management today and find out why **Starting A Trust Begins With Trust.**



**Vicki Myers**  
Vice President & Trust and Investment Management

- ◆ Investment Management
- ◆ Estate Planning
- ◆ Financial Guidance

[cbtfinancial.com](http://cbtfinancial.com)  
1-888-765-7551



Not FDIC insured, not guaranteed by the bank or government agency, not a bank deposit and may lose value.

## Advertising Opportunity

Reserve your space in the **“Moshannon Valley Progress.”** Take advantage of absolutely **free** advertising for your business. Contact the Partnership for details. Contact Sharon Yingling at 814-342-2260 or send an email to [sharonf@mvedp.org](mailto:sharonf@mvedp.org). Advertising is free to Partnership members only. Limited space available so call today.





ChemStation specializes in many different industries, including truck wash/vehicle cleaning, floor care, food processing, odor control, parts cleaning, and many more. Our system is your solution to meet all of your cleaning and process chemical needs.

- Custom formulated products that are environmentally friendly, water-based, and biodegradable
- Local supplier/no freight charges
- Delivered to free refillable containers
- No disposal



REFILL...NOT LANDFILL.

For more information contact  
Bonnie Fenush at 814.342.9170  
x1301 or bfenush@chemstation.net

(814) 277-6887



**SNEATH FIRE SAFETY EQUIPMENT, INC.**  
EXTINGUISHER SALES & RECHARGING  
INSURANCE & OSHA INSPECTIONS

CRAIG SNEATH

415 FIVE POINTS ROAD  
LA JOSE, PA 15753



**WASSON INSURANCE AGENCY**  
2440 Commercial Blvd.  
State College, PA 16801

Personal Service by: Office: 814-237-5378  
AMY J. HOUSER, CIA Cell: 814-880-2531  
amyjhouser@yahoo.com Toll Free: 866-936-0527  
www.wassonins.com



**800-874-8341**  
www.choicebumper.com  
100 North 9<sup>th</sup> Street  
Philipsburg, PA 16866

**BODY PANELS  
WHEEL LINERS  
BUMPERS  
BEDLINERS  
LIGHTS  
MIRRORS  
STARTERS  
DOORS  
FENDERS  
FUEL LINES  
GAS TANKS**

**DIXONCOM**  
TECHNOLOGY SERVICES  
**814.287.1038**



PC & MAC COMPUTER REPAIR  
VIRUS & MALWARE REMOVAL  
HOME & BUSINESS NETWORKING  
NEW & REFRUBISHED COMPUTER  
TRAINING & TUTORIALS

**Ricotta Jewelry**  
Your watch & jewelry repair center  
Since 1968

James E. Ricotta  
Watchmaker  
Jeweler  
Goldsmith



105 N. Front Street  
Philipsburg, PA  
(814) 342-3709

Mary Kay's Catering  
CATERING FOR ALL OCCASIONS



5330 MORRISDALE/ALLPORT HWY  
ALLPORT, PA. 16821  
814-345-1128

Mary Kay Beveridge  
OWNER  
MKCATERING16@G-MAIL.COM

When our community succeeds, we all succeed.

At M&T Bank, we know how important it is to support those organizations that make our communities better places to live and work. That's why we offer both our time and resources and encourage others to do the same.

Philipsburg Branch  
409 North Front Street  
Philipsburg, PA 16866  
814-342-0300



**M&T Bank**  
Understanding what's important®

PHILIPSBURG BRANCH  
LENDER **mtb.com** ©2014 MGT Bank. Member FDIC.


**Central Intermediate Unit #10**  
345 Link Road West Decatur PA 18728 • 814-342-6884 or 1-800-982-3375 (PA only)

The CIU #10 offers the following services to Centre, Clearfield and Clinton Counties:

- Customized educational services to business and industry
- Special Educational services
- Curriculum and Instruction liaison with Pennsylvania Department of Education
- Charter School liaison
- Non-Public School services
- Galaxy Arts in Education
- Early Intervention/ Preschool Services
- GED instruction and testing

Check our complete listing of services online at [www.ciu10.org](http://www.ciu10.org)

**WALTER HOPKINS & COMPANY, LLP**  
CERTIFIED PUBLIC ACCOUNTANTS



Providing services since 1927:  
**TAX-ACCOUNTING-AUDIT**

Philipsburg 342-2155  
Clearfield 765-7876

"Experienced and Reliable"

CALL OR VISIT US AT [WALTERHOPKINSCO.COM](http://WALTERHOPKINSCO.COM)

**DRIVING RANGE**

**BIG ROCK SWING & PING I.I.C.**  
OPEN DAWN TO DUSK  
Fully Automated  
10 pads plus grass area!

Club rentals available during store hours!

Route 53 Houtzdale-Madera Hwy.  
Next to B & G Trees and Nursery

**\$5 Large Bucket** (72 Balls)  
**\$3 Small Bucket** (36 Balls)

**378-5600**

**Vaux Electronics**  
**814-342-1611**

**verizon wireless** Service Provider



DIRECTV  
dish NETWORK  
SIRIUS SATELLITE RADIO

Providing Infrastructure Solutions Since 1962.

**HRG**  
Herbert, Rowland & Grubic, Inc.  
Engineering & Related Services  
AN EMPLOYEE-OWNED COMPANY

LAND DEVELOPMENT  
TRANSPORTATION  
WATER RESOURCES  
ENVIRONMENTAL  
WATER & WASTEWATER  
GEOMATICS  
FINANCIAL

[ BUILDING RELATIONSHIPS. DESIGNING SOLUTIONS. ]

814.238.7117 [www.hrg-inc.com](http://www.hrg-inc.com)



## Welcome New Member

### D. A. Stryker Trucking & Excavating

1560 Burns Road  
Muncy, PA 17756  
Phone: 1-570-419-7050  
Fax: 1-570-435-5188  
David A. Stryker, Owner

## Organic Climbing Planning New Manufacturing Facility in Business Park

In October 2010, the Partnership was pleased to welcome Josh Helke and his company Organic Climbing to the Regional Business Center. Josh moved with his family from Minneapolis, Minnesota to the State College area where his wife took a teaching job with Penn State University. Josh is now proposing to build a new 20,000 square foot manufacturing plant on Lot #5 in the Business Park. The Partnership recently submitted a state PIDA loan application to Harrisburg to secure an \$800,000 loan at 2%.



Josh started Organic Climbing, LLC in Laramie, Wyoming in 2004. The company manufactures high quality innovative rock climbing gear. Some of the company's products include rock climbing pads, clothing, and backpacks. There are currently 16 full-time employees and within three years, the company will hire five additional full-time employees. Construction of the new manufacturing facility is scheduled to begin over the winter and be completed by the summer of next year. The Partnership is very pleased to be working with Josh on a project that will enable his manufacturing company to continue to grow.

## Thank You!

The Moshannon Valley Economic Development Partnership thanks you for your support of our economic & community development efforts!

### Renewals 3rd Quarter

Advanced Powder Products  
Blaise Alexander Chevrolet Buick  
Casteel Chiropractic Clinic, Inc.  
Cen-Clear Child Services  
Centre Daily Times  
Certified Builders Wholesale  
Chester Hill Borough  
Choice Bumper  
Children's Aid Society  
Clearfield Co. Career & Technology Center  
Clearfield Co. Recreation & Tourism Authority  
Coleman's Asphalt Sealcoating  
Conklin's Corner Antique Mall & Gift Barn  
Custom Castings Northeast  
Decatur Township  
Diamondback Automotive Accessories  
Dixoncom, LLC  
Genna Ice, Inc.  
Habitat for Humanity for Greater Centre Co.  
Heath Funeral Home  
Houtzdale Heating & Air  
Karen Blair  
Keller Engineers  
King Coal Sales, Inc.  
Larry's Saw Shop  
Lewis Paving & Sealing, Inc.  
Lumadue Excavating, LLC  
Olenick's Printing  
PA American Water Co.  
Philipsburg Electric Supply  
Ricotta Jewelry  
Saupp Signs

Continued on Page 8





Suite  
113  
11,000 sf.

Suite  
130  
15,000 sf.



Suite  
190  
10,000 sf.

## Space Available at the Enterprise Center

The Partnership's staff is working diligently to recruit new businesses to the Enterprise Center facility. Joe Herrle of Kissinger Bigatel and Brower is representing this property and he too is hard at work trying to find businesses that need good space for their operations. The table below identifies the suites that are currently available.



Suite 130 .....	15,000 sf.
Suite 113 .....	11,000 sf.
Suite 190 .....	10,000 sf.

## Philipsburg/Moshannon Valley Manufacturers Recognized

Pennsylvania's official Manufacturing Week is from September 30<sup>th</sup> to October 6<sup>th</sup>. This week of recognizing manufacturers complements the national initiative "National Manufacturing Day" which is Friday, October 6<sup>th</sup>. The MVEDP is pleased to recognize the manufacturers who call the Philipsburg/ Moshannon Valley region home. Thank you for the jobs that you provide, the tax revenues that are generated by your businesses, and the overall economic boost that you provide to the region.

Lee Industries  
 UMI Performance  
 Diamondback Truck Covers  
 Cutting Edge Machining Solutions  
 Drucker Diagnostics  
 EC Power  
 Harpster of Philipsburg  
 Genna Ice  
 Holt Precision Tool

Reichdrill, Inc  
 Custom Castings  
 PMG PA Corp.  
 Walker Lumber Co.  
 Advanced Powder Products  
 PolyK Technologies  
 Navaco Industries  
 Pre-Cut Lumber  
 G-O-Metric, Inc.

Glen-Gery Brick  
 Kitko Wood Products  
 Penn Pallet  
 Chem Station  
 Organic Climbing  
 Grauch Enterprises  
 Bock Industries  
 Dura-Kan  
 General Opto Solutions

Thank You  
Continued from Page 6

Sherwin-Williams  
Stone Valley Construction  
The GEO Group, Inc.  
Tom Scott  
UMI Performance  
Vaughn Environmental Services, Inc.  
Your Building Centers

## Sites Available at the Regional Business Park

<u>Lot #</u>	<u>Total Acres</u>	<u>Developable Acres</u>	<u>Asking Price</u>
Lot #3	8.5	1.2	\$30,000
Lot #5	8.9	2.8	\$70,000
Lot #6	4.9	2.2	\$55,000
Lot #11	4.9	4.9	\$123,075



MOSHANNON VALLEY ECONOMIC  
DEVELOPMENT PARTNERSHIP  
200 SHADY LANE  
PHILIPSBURG, PA 16866

